

Scale 100 ft. 1. Inch

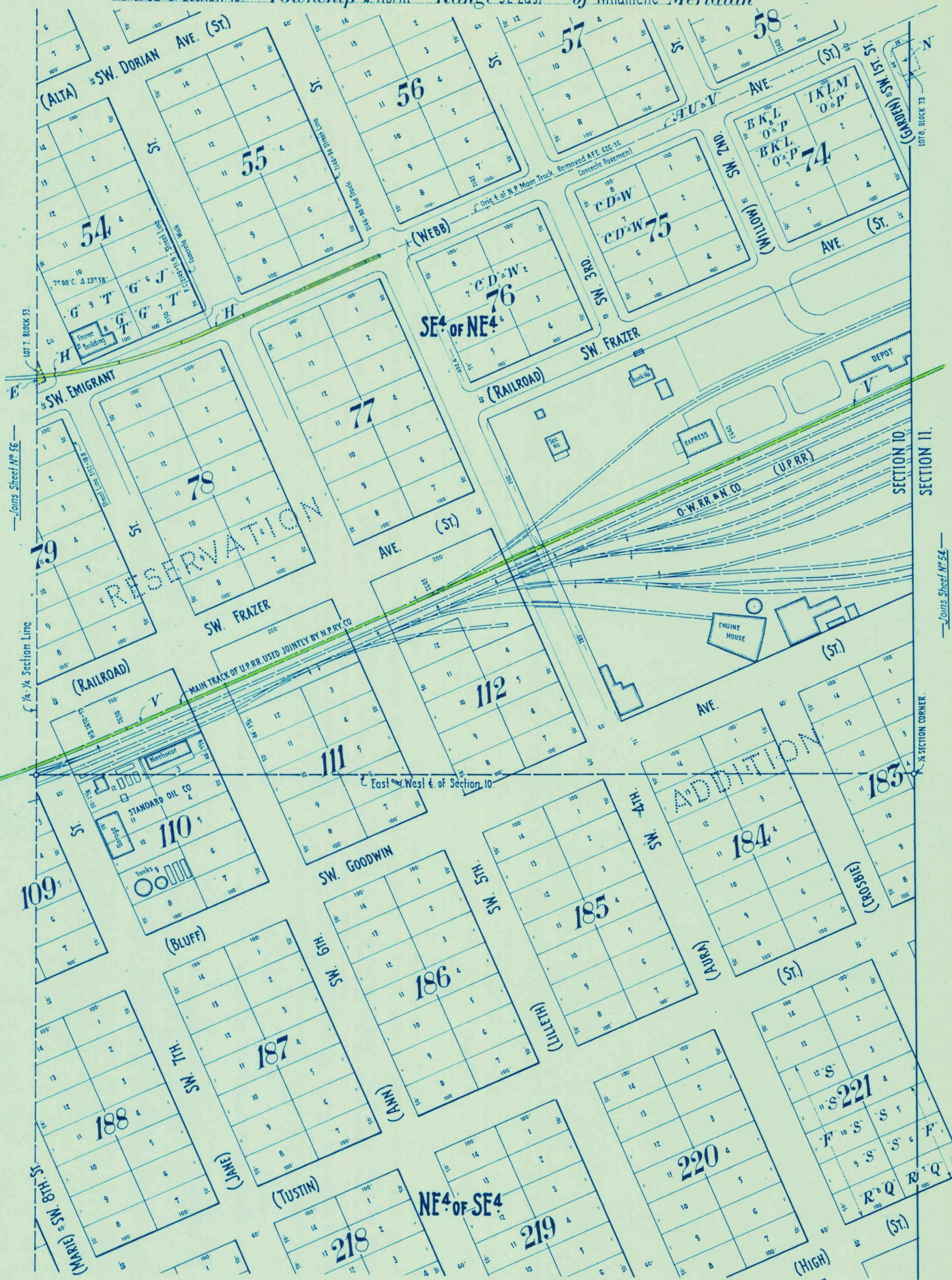
# N. P. Ry. Right of Way Plat

**PENDLETON**  
OREGON

Parts of SE<sup>4</sup> of NE<sup>4</sup> and  
NE<sup>4</sup> of SE<sup>4</sup> of Section 10

Walla to Pendleton  
State of Oregon  
Township 2 North Range 32 East of Willamette Meridian

NOV 1 1960



NOTE FOR DEED RECORD, SEE SHEET NO 55A.