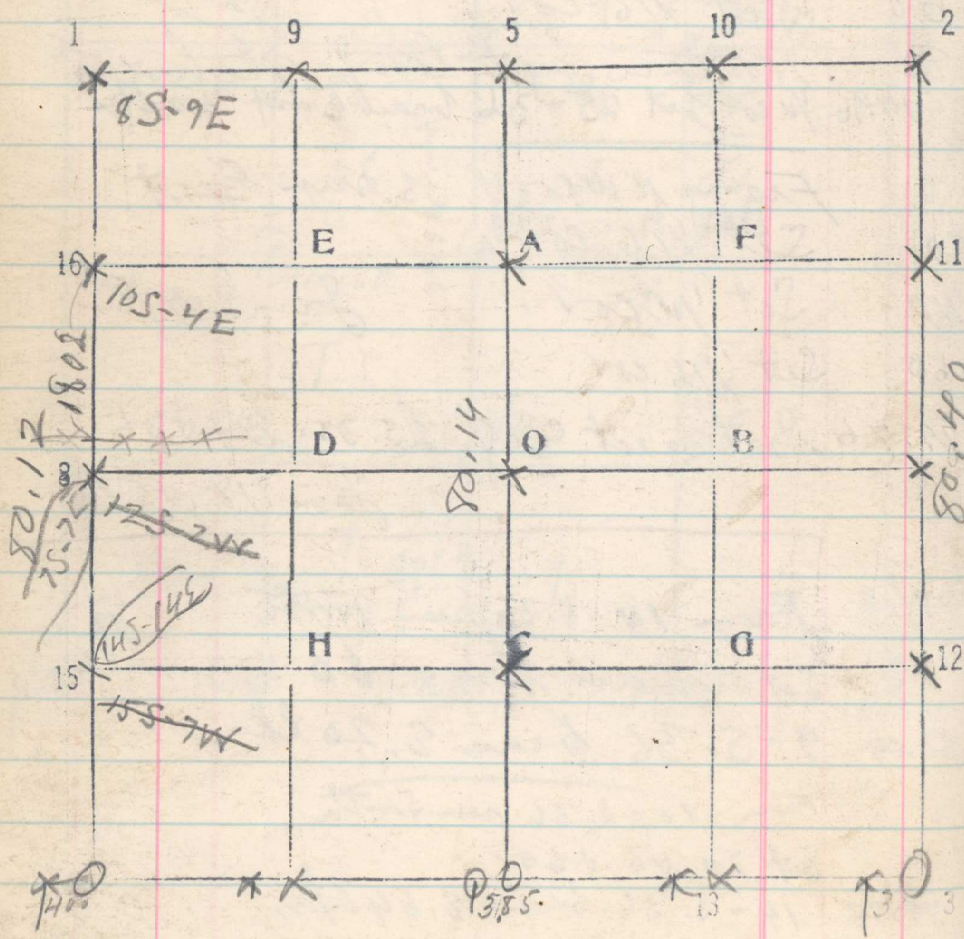


15

Sec. 33

T. 1 N

R. 33 E



4/5/19 From 16-S. 33 run South by BS.
30 lks. E. of cor of 20, 21, 28 & 29 **111**

- 18.02 Fence E row (nearby)
- 20 Set ~~1/66~~ in fall wheat
- 40 Set ~~1/66~~ in fall wheat
- 60.21 Cor of 32 & 33 bears East 2 lks.