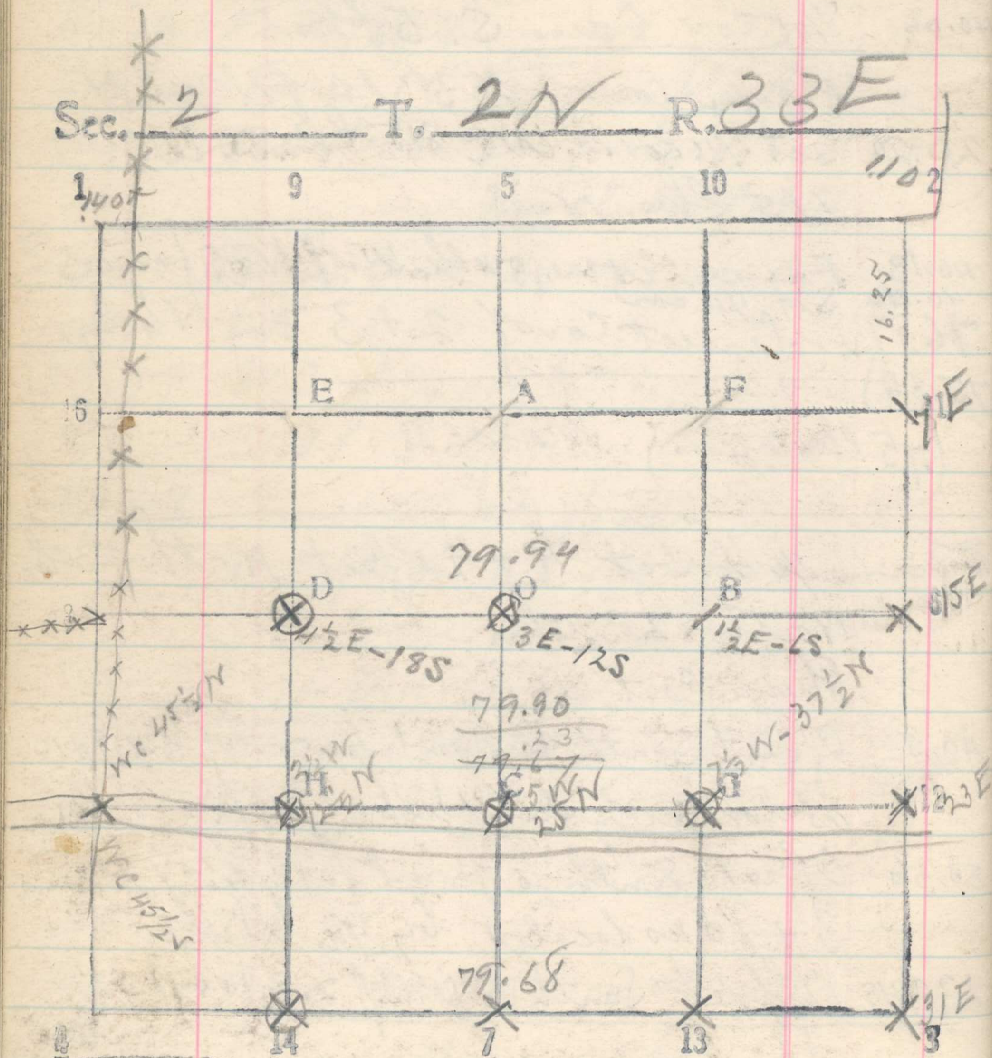


37

$$\begin{array}{r} 30 \\ 15 \\ \hline 45.45 \end{array}$$


133

Easton N body Sec. 2
1140 Fence post in fence, N. S + E, probably
point for CC of 34 + 35 Fennon line to E

20 Set

40 Set

60 Set

80.00 Set

(81.57 Fence cov. E. W + S.) March 6

From 15 S 2 run S 89°45' E by rd on

20 Set 1/16 cor

2007 On line with fence to S.

41 In Hay corner
Set 1/16 cor on line with fence to S

4007 On line with fence to S

60 Set 1/16 cor

66.37 Fence N + S

79.96 49.67 1/16 cor at 12-S-2 bears
80.00 Set stake 35 15x8x6. 4 lbs

Thence South, 90° from random from W.

141 Post E.W.

From cor of 1 + 2 run S,

16.25 Set 1/16 cor

36.25 Set 1/4 cor (temp stake set from E. to 27 lbs
and 53 lbs E.)

56.25 Set 1/16 cor

temp stake at 80 from W. bears Post 33 lbs
March 8, 1918

76.25 Set stake. cov. of 1.2.11 + 12

9.25 Thence South
Abank of river N 60° W