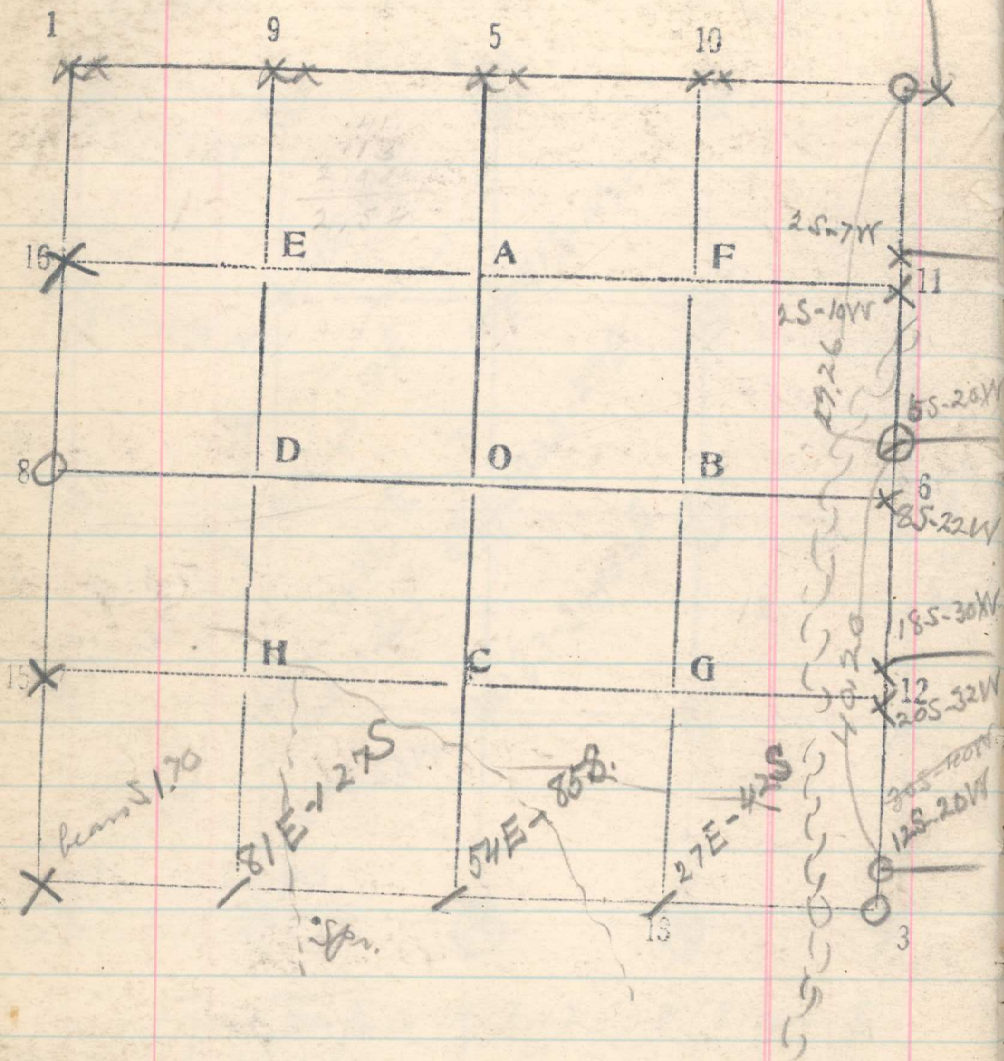


Sec. 1 T. 2N R. 35E



Sept 3. From CC of 12N R. 35E

- 920 Set  $\frac{1}{16}$  cor - 16-S.6  
 1295 Set  $\frac{1}{16}$  cor - 11-S.1 170  
 29.26 <sup>evidently</sup> a stone that <sup>marks</sup> ~~marks~~ <sup>not plain</sup>  $\frac{1}{4}$  cor - beans W, 20 lbs.  
 Set  $\frac{1}{4}$  cor for Sec 6.  
 32.95 Set  $\frac{1}{4}$  cor for Sec. 1  
 49.20 Set  $\frac{1}{16}$  cor, 15-S.6  
 52.95 Set  $\frac{1}{16}$  cor, 12-S.1  
 69.40 <sup>(69.20)</sup> old cor of 6+7-R. 36E, a stone, properly  
 + 3.89 marked, beans W, 20 lbs.  
 Thence South  
 3.89 <sup>(3.75)</sup> old CC of sec 1+12, a stone, properly  
 marked, in remains of MS. Beans  
 W, 20 lbs.  
 Thence West bet. 1+12  
 5.00 Summit, N+S.  
 19.36 Set  $\frac{1}{16}$  cor, 13-S.1  
 39.36 No trace of  $\frac{1}{4}$  cor. Set stake  
 59.36 Set  $\frac{1}{16}$  cor, 14-S.1 Sept 2.  
 78.33 Temp cor of 1.2.11+12, beans S. 148 lbs  
 (77.36)  
 78.28 Cor of 1.2.11+12 beans S. 170 lbs.