

2,785

5

13,925

3,60

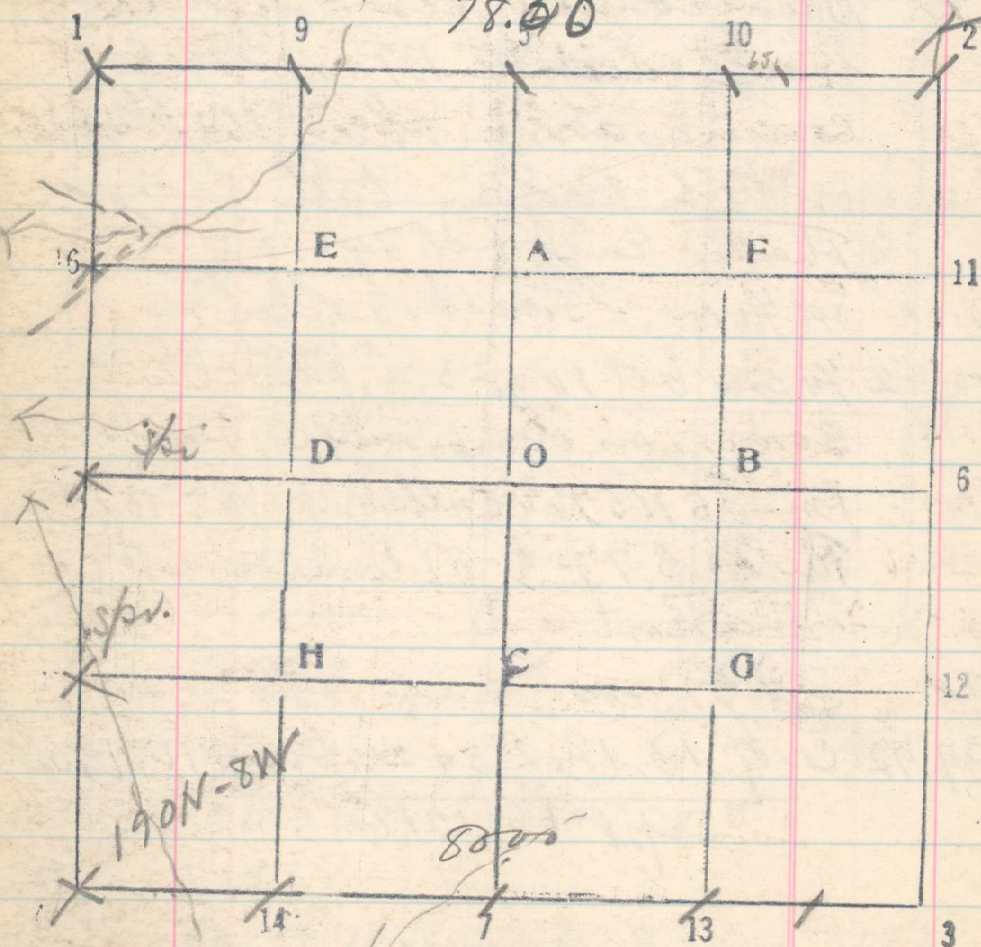
17,52

Sec. 13

T. 2 N

R. 35 E

78.50



From trap cor of 13, 14, 23 & 24,
 set from West which is 190 lks S,
 and 8 lks E. of true corner point,
 run East.

9.00 Canyon, N.

179

20 Set 1/16 cor

40 No trace of 1/4 cor Set stake

60 Set 1/16 cor

70 Set stake & go to camp, Sept. 16, 1918

East bet 12 & 13

20. Set 1/16 cor,

22 Canyon, S 120° W soon turn SW

40 No trace Set 1/4 cor

55.50 Ridge N & S

60 Set 1/16

65 Set stake, Oct 9, 1918

78.49 C.C. of sec. 12 & 13 bears N. 56 lks
 finished July 2, 1917