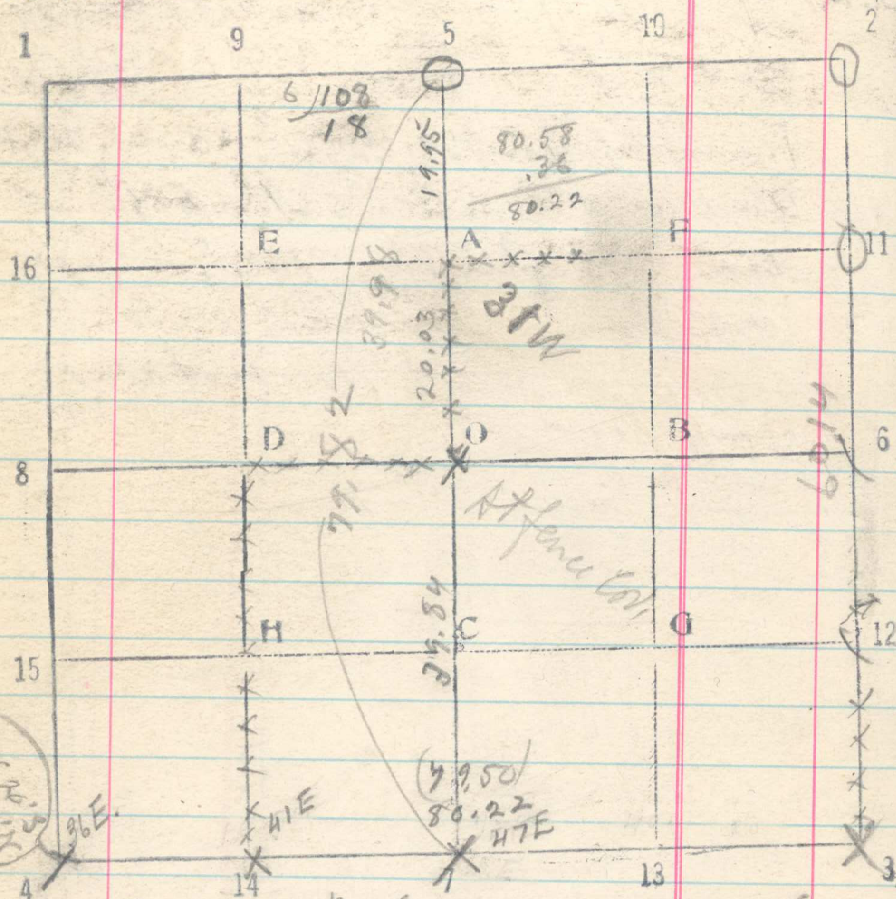


Sec. 14 T. 2 N R. 35 E.



From top end of 14, 15, 22 & 23 run E

- 19.64 On line with fence to N.
- 20.03 On line with center of lane to S, 40 lks wide.
- 40.00 No trace of 1/4 cor. set stakes
- 60.00 No trace of 1/16 cor.
- 80.56 Cor of 13, 14, 23 & 24. as established by me.

From 7-S, 1/4 run N.  
 39.84 Fence corner N + W, evidently at 19.3  
 59.87 Fence cor. S. + E, bears E. 23 lks.  
 at 1/16 cor. S. + W (31 W)  
 79.82 Pt. for 1/4 cor. bet. 11 + 14, bears west 20 lks.  
 Located this point by old bearing trees  
 Pine 22 bears N 15° E 68 lks, mtd. S 1/4 B.T.  
 Stump of fallen pine, partly decayed,  
 bears South 85 lks, mtd. S 1/4 B.T.  
 Oct 23, 1918