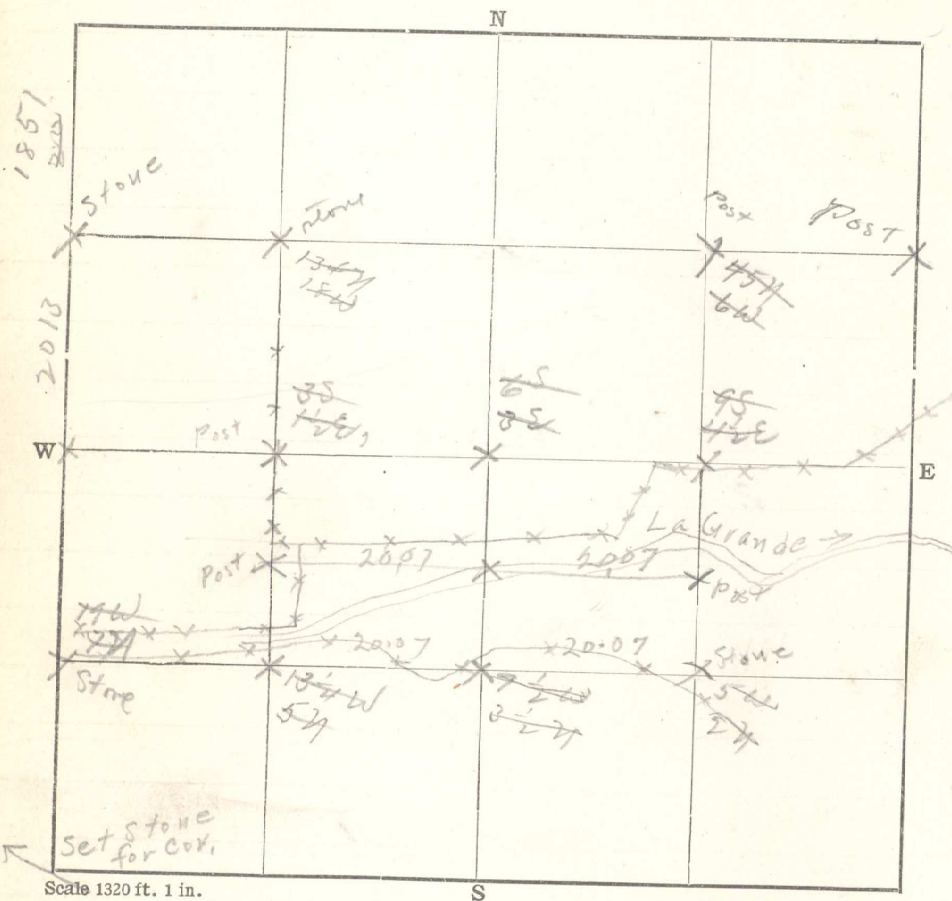


Sec. 2 T. 1 R. 32
 Examiner Date 10/4 1918



E from Cr 8-52

20

40

60

8006 Cr 6 bears S 12 lbs.

2002 from 4+5

W from Cr 12 -

20

40

60

8019 Cr 15 bears N 17 lbs.

N from Cr 4-52

20 Set stone

4014 Cr 8 bears W 38 lbs.

N from Cr 4-52

10 Set stone

1997 Cr D-52 bears W 26 lbs.

S from B-52

10 Set stone

1998 Cr G bears E 17 lbs.

W from Cr 11

20

60

8024 Cr 16 bears N 179 lbs

S from Cr 1

1840

3864 Cr 8-52

Apr. 25/1919 From H run East

20 Set C-S-2

40.14 Intersect G-S-2

From B-S run West

20 Set 1/32

40.14 Intersect B-H-S-2