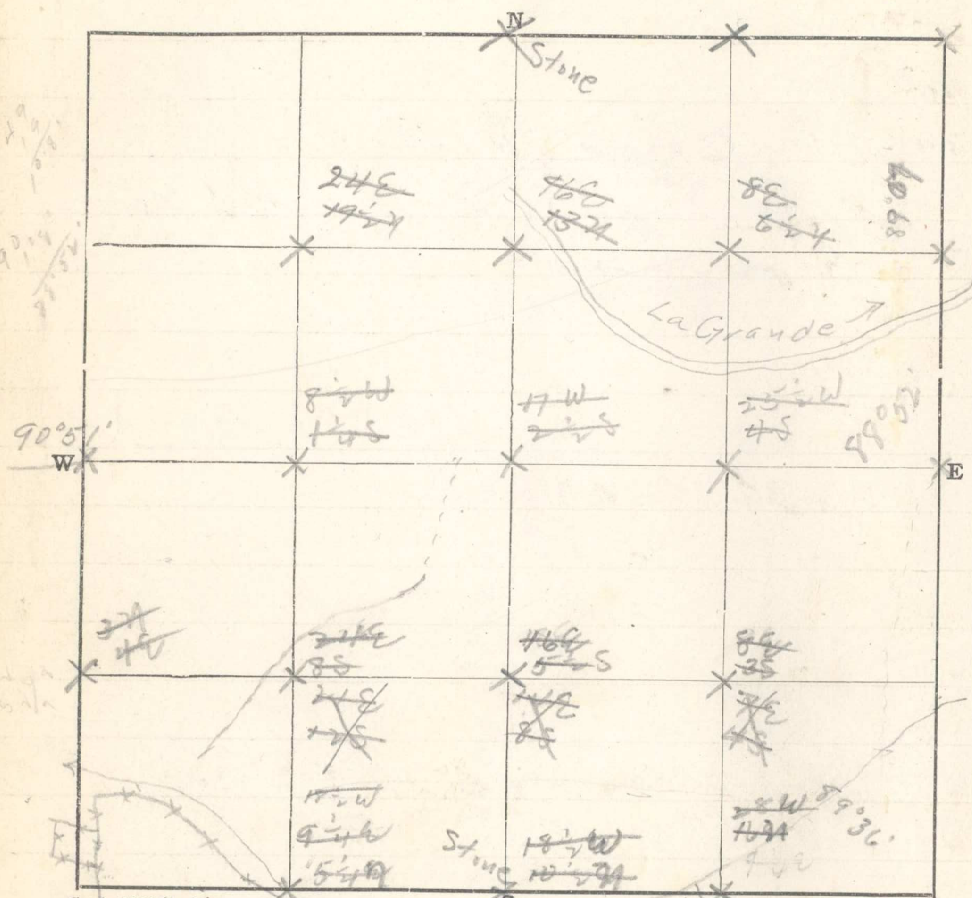


Sec. 12 T 1 R. 33

Examiner LCR Date 4/18 1918.



E from Cr 8 - back sight on 8 S 114 + tang 49 1/2 R.

20
40
60

7966 Cr 6 bears S 5 lbs

343

N from Cr 6
2060 Cr 11 bears W 11 lbs
W from Cr 11

20
40
60

7968 Cr 16 bears N 26 lbs. ~~7964 No. 29~~
4/19 - E from Cr 4

20
40
60

7963 Cr 3 bears N 21 lbs.
W from Cr 12

20
40
60

7972 Cr 15 bears S 16 lbs. 7968 S. 11