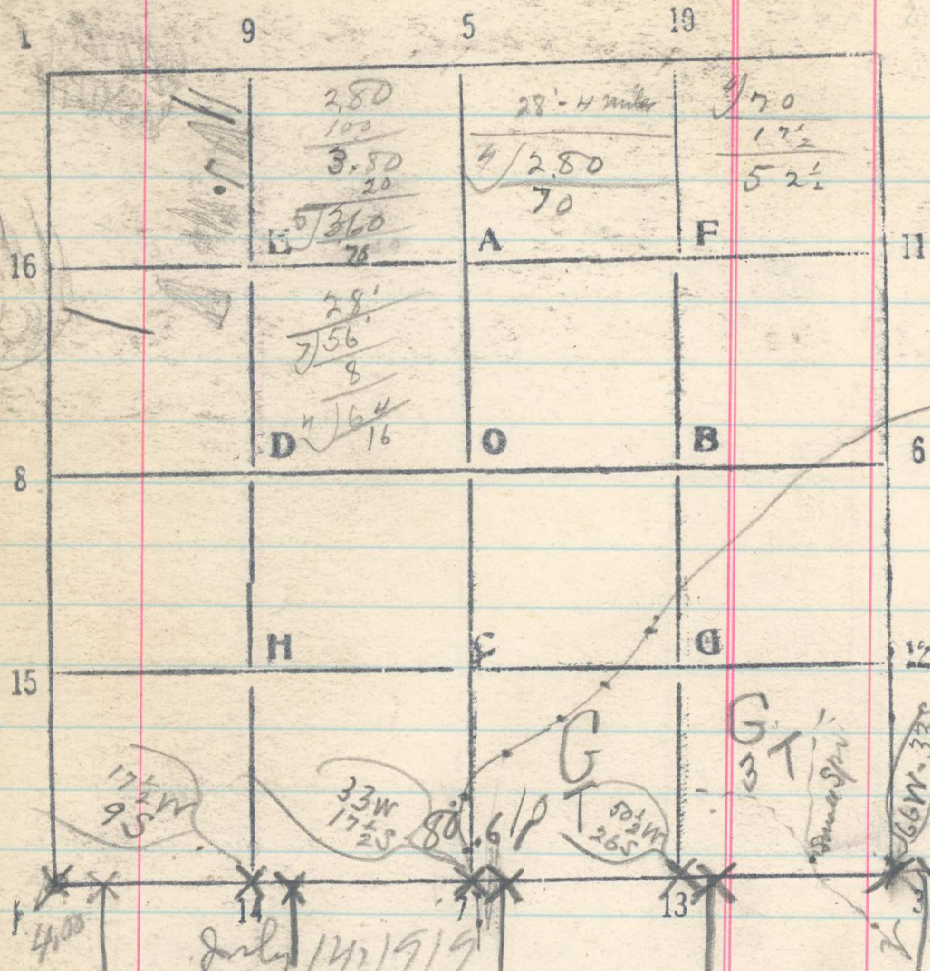


18  
 Sec. 32 T. 2 N R. 35 E



July 14, 1919

From cor of 31 & 32 run East by plan

- 4.00 Set C.G. of Secs. 5 & 6 <sup>2.13 to S. of line 40</sup> not agree with notes
- 20 Set 14-S. 32
- 23.91 Set 9-S. 5
- 40 Set 1/4 cor for sec. 32 known of old cor

- 40.12 Telephone line \$1000, but not 17-9-17-10
- 44.10 Set 1/4 cor for sec. 5
- 60. Set 14-S. 32
- 63.66 Flag about 4 miles E. of 28' 61 W. 1
- 64.00 Set 13-S. 32
- 80 No trace of cor of 32 & 33  
 There is a ~~cor~~
- 3.65 No trace of CC of 4 & 5. Set at lat. July 14, 1919