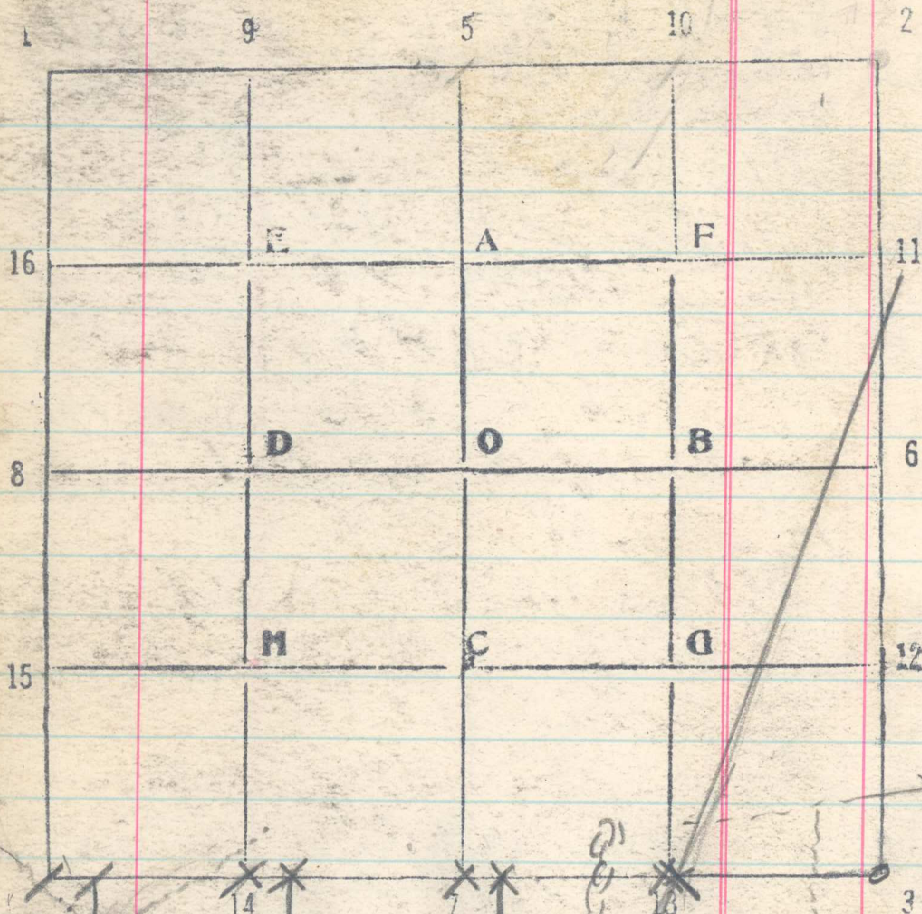


19 - 36 T. 2N R. 35E



From temp CC to Sec 1 + 2  
 187° 29' E by solar  
 19.80 Cor of 9 po 1 + 2 N. R. 35 + 36 E  
 beds 15.98 lbs  
 locate this pt by measuring  
 87° E 27 lbs from old BT

in sec. 36 - T. 2N R 35E. a pin  
 14 ins mlg T 2N R 35E S. 254  
 sent into this tree about 3 ins to  
 uncover the marks. Notation  
 of other 3 B.T.S. July 15 1919

July 16. From point 98 lbs N. + 20 lbs W of  
 temp 13 - S. 36, set from N. run  
 S 89° 30' W. by solar toward  
 cor of sec. 31 + 32

Hence, from cor of 1 + 2 N. R.  
 20 35 + 36 E run  
 S 89° 30' W toward cor of 31 + 32

19.80 Set temp 13 - S. 36 104 lbs S of  
 this line

28. Main ridge bet Squaw Cr  
 Meadow, N + S

36.35 Set 1/4 cor for sec. 1.

40 Notation of 1/4 cor for sec. 36 set station

45 Desc a depth N + S

56.35 Set 1/6 cor. 9 - S. 1

60 Set 1/6 cor. 14 - S. 36

76.35 Sit CC of sec. 1 + 2

79.60 Temp Cor of sec 35 + 36 set from pt. beam

79.00 set cor of 35 + 36