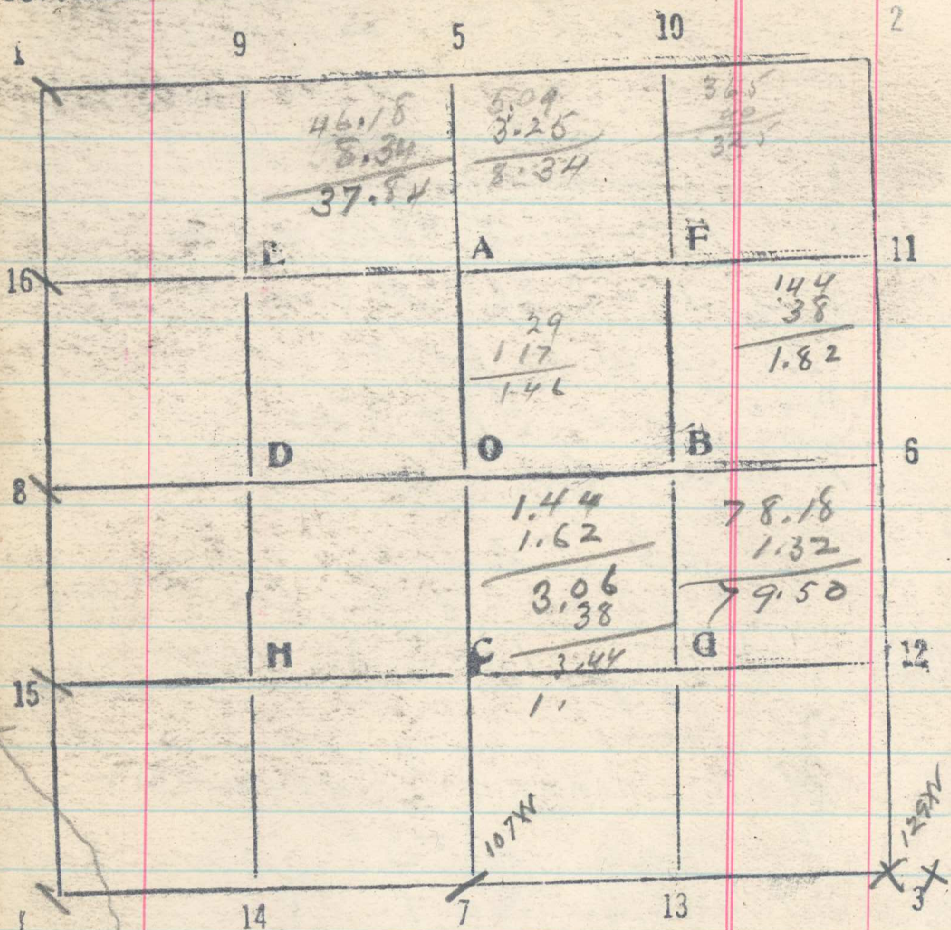


20  
Sec. 35 T. 2 N R. 35 E



Went on study sec 35

37.84 Ridge N 30 20 Bar as follows:  
 N 40° W 5.01 N 35° W 3.21  
 N 19 3/4° W 8.55 5.65 2.63  
 (cont. 33 lks.) (W. 36 lks.) 52 .78  
 10.00 5.42 + 35.75

Temp CC of sec #2 bears S 77° 47' E  
 Dist. tan 77° 47' x base = 4.618 x  
 10 = 46.18 + (37.84 + 5.28 = 43.12) = 89.30

509 + 325 = 8.34. 46.18 - 8.34 = 37.84

- 40. ~~Temp~~ continue west
- 60. Set 1/16 cor. 14 - S. 35
- 74.85 Creek channel. NW (of 34 + 35 set from N)
- 78.56 Intersect line bet. sec. 34 + 35. 5.34 cl. of temp cor
- 80. No new. Set cor of 34 + 35 July 17/27

From 15 - S. 35 continue South  
 on line bet 34 + 35

- 69.50 Creek, water in ponds, N.W. arc.
- 74.66 Intersect random S bdy from East 144 lks E of  
 temp cor of 34 + 35
- 77.99 Intersect random S bdy from west  
 38 lks. W. of temp cor of 34 + 35