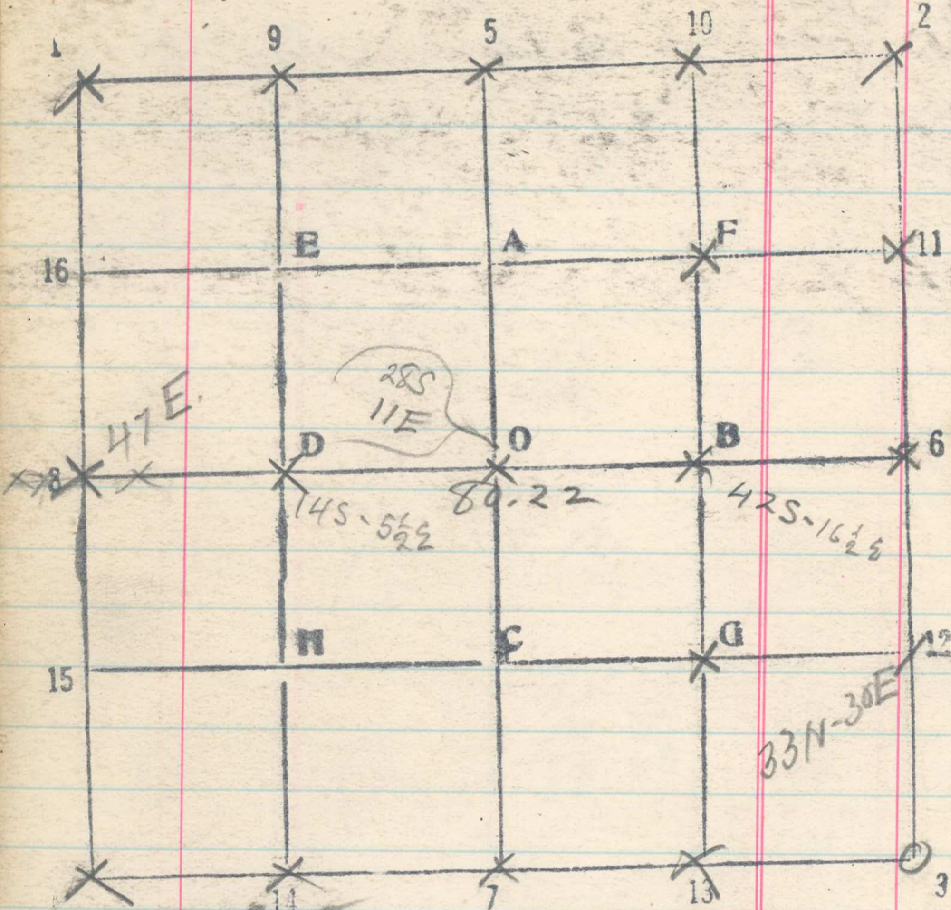


Sec. 23 T. 3 N R. 30 E 11



North bet sec 22 + 23  
 40.35 Fence E + W Notice of 1/4 cr  
 Set 1/4 cr.

80.70 Cr of sec. 14, 15, 22 + 23  
 bears E. 94 lks  
 From 1/4 cor bet 22 + 23 run East

20 Set 1/4 cr S. 23  
 20.47 Fence N + S to road  
 21.03 Fence N + S  
 40 Set B - S. 23  
 40.80 on line with division bet, plowing to S.  
 60 Set 1/4 cr B - S. 23

246

80.22 1/4 cr bears S. 56 lks June 28 1879