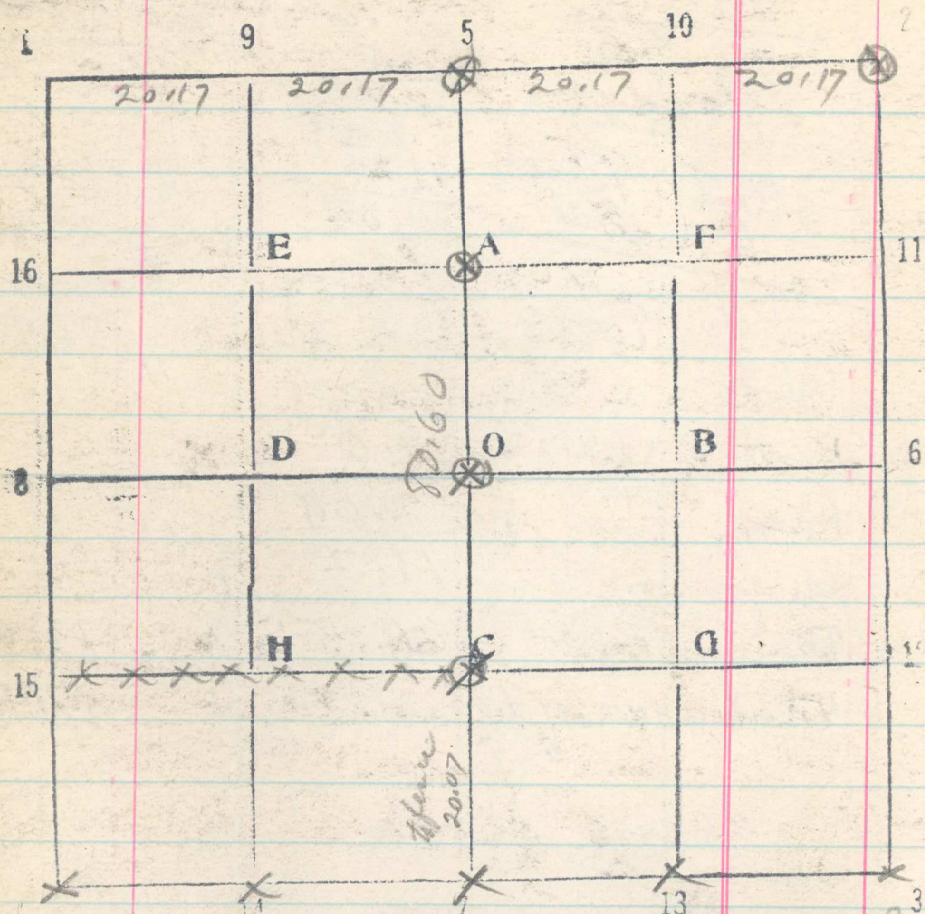


45
Sec. 17 T. 3 N R. 35 E



From $\frac{1}{4}$ corbet 17+12 run North
20.07 On line with fence to W, +
about 70 lks. E of fence to N + W

40

60

80.60 Center of Road. E + W

From center of road, at cor. ^{cross} 280
7.8, 17, + 18, 90 lks wide N + S + 86 lks
wide, E + W, run East

20.17 On line with fence to N

40.34 On line with fence to N

44.06 Temp stake set from S.

41.45 On line with fence to S

60.28 On line with fence to N

60.51 On line with ridge to S.

80.68 Center of road, E, W + N, 87 lks

Wide running N.

Oct 18, 1919

From point 44 lks. W. of center of road
at cor. of 77, 18, 19 + 20, run N

20.29 On line with fences to E + W

40.48 On line with fence to W. Center of road
bears East 15 lks.

41
26
15