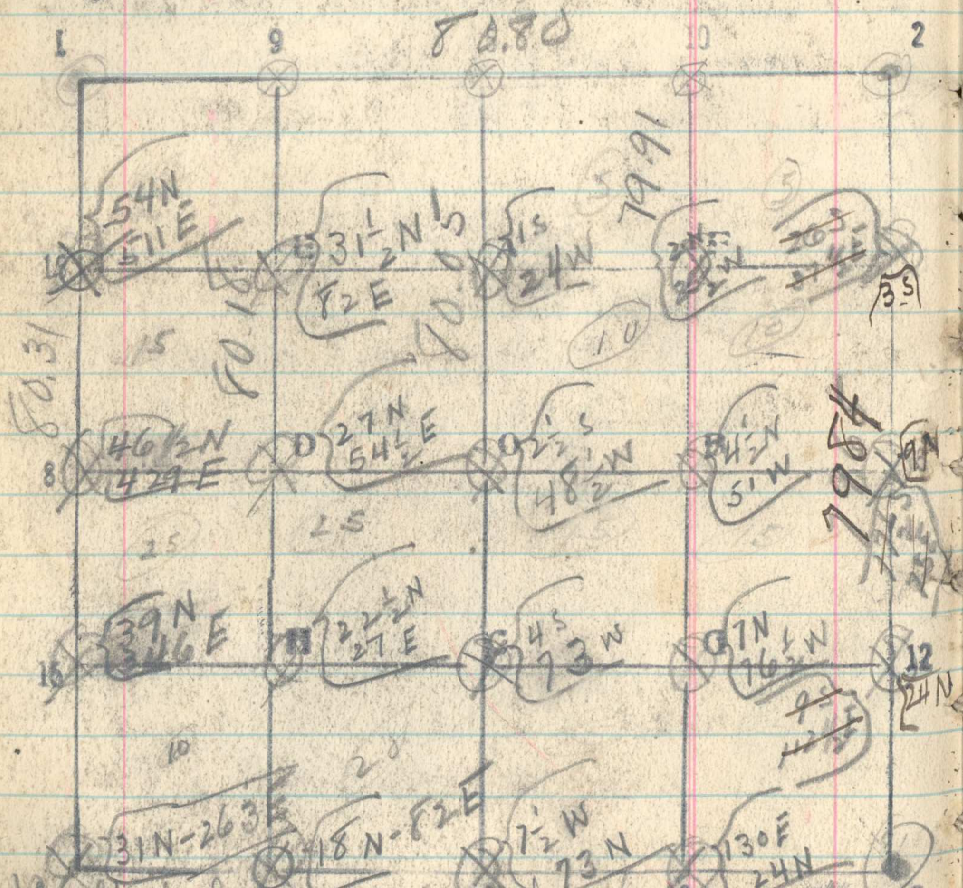


15th thru West half line - 14-9
 60.33 1/6 cor 9 bears E 109 lbs

Sec. 26 T. 2 N. R. 34 E



North between 26 & 27 from temp sec. cor. from S. 3
 19.9 old temp corner bears west 2 lbs
 29.70 temp corner line
 50.62 temp corner = 594 lbs

1/2 South thru East half line 10-13

Set 20 - 40 - 60

491

80.00 set temp 1/6 cor. No other corner found.

Thru East line 13-3

17.71 temp. sec. cor. (80 ch from South)
 bears South 2 lbs.

North between 25 & 26 from temp sec. cor.

2 1/2 line 3-2

20 set temp 1/6 corner in creek, 5 lbs NE

40 No trace of corner. Set temporary mark

60 set temp 1/6 cor 11

35 Creek 10 lbs NE, 45 creek 10 lbs N 20 E

Richard making dirt from old cor 29.74

19.9 section corner 25-26 35-36 on line

1/2 South thru center of 20 June 5-7

Set 20 - 40 - 60. (62 Rod N 30W - 530 E)

80.78 Old temp 1/4 cor bears W. 89 lbs.

1/2 West between 26 & 25 from temp sec. cor.

corner 25-26 35-36 line 3-4

17.71 temp 1/6 cor from N bears W. 15 lbs.

20.03 old temp 1/6 cor from E on line

18 Road N-S, 2500 Rod N 30W - 530 E

37.99 temp 1/6 cor from N 20 E 18 Rod N 30W - 530 E

75 Creek 10 lbs N. 6W

82.04 temp sec. cor.