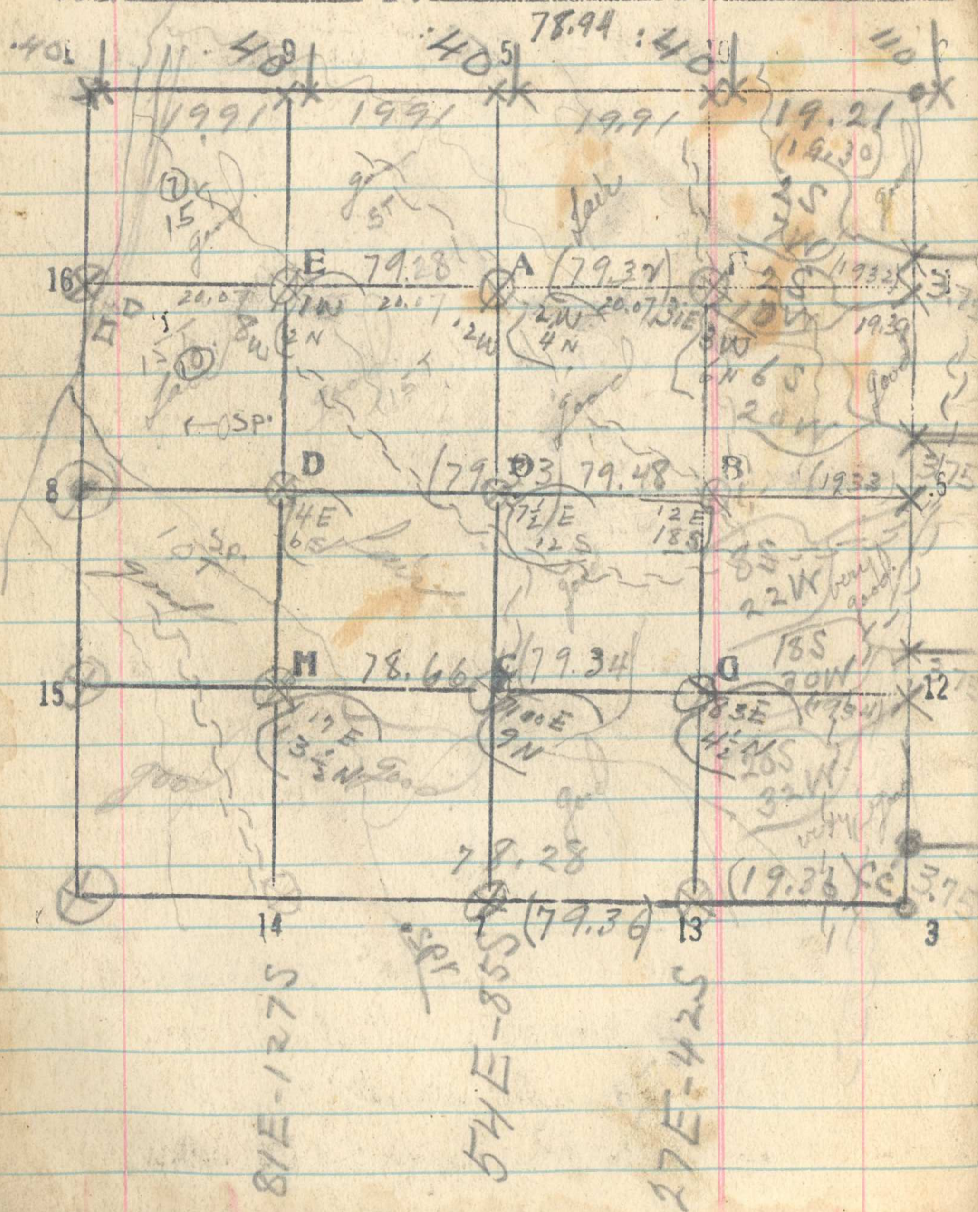


28

Sec. 1

T. 2 N

R. 35 E



5/10

504

Line 16-11 East three fourth half

1 Squaw Creek Sheds N.

6 Road N-S.

Set 20-40-60.

23 Coulee shed N 30W. 48 Coulee shed N W

68 Coulee shed N 10W

79.66 1/16 Cor 11 bears N 8 Lks

5/21 Line 6-8 East three center from

L.S. on 8-5.2

Set 20-40-60

8 Coulee with creek 2 1/2 W. Sheds N.W.

79.48 1/4 Cor 6 bears S 24 Lks

5/21 Line 12-15 East three South half

with f.s. C-S.2

Set 20-40-60.

6.50 Top of ridge divide between Squaw &amp; Mackam

52.50 Coulee, no water, Sheds N 20W.

72 Coulee Sheds N.W.

78.66 1/16 Cor 15 bears N 18 Lks.