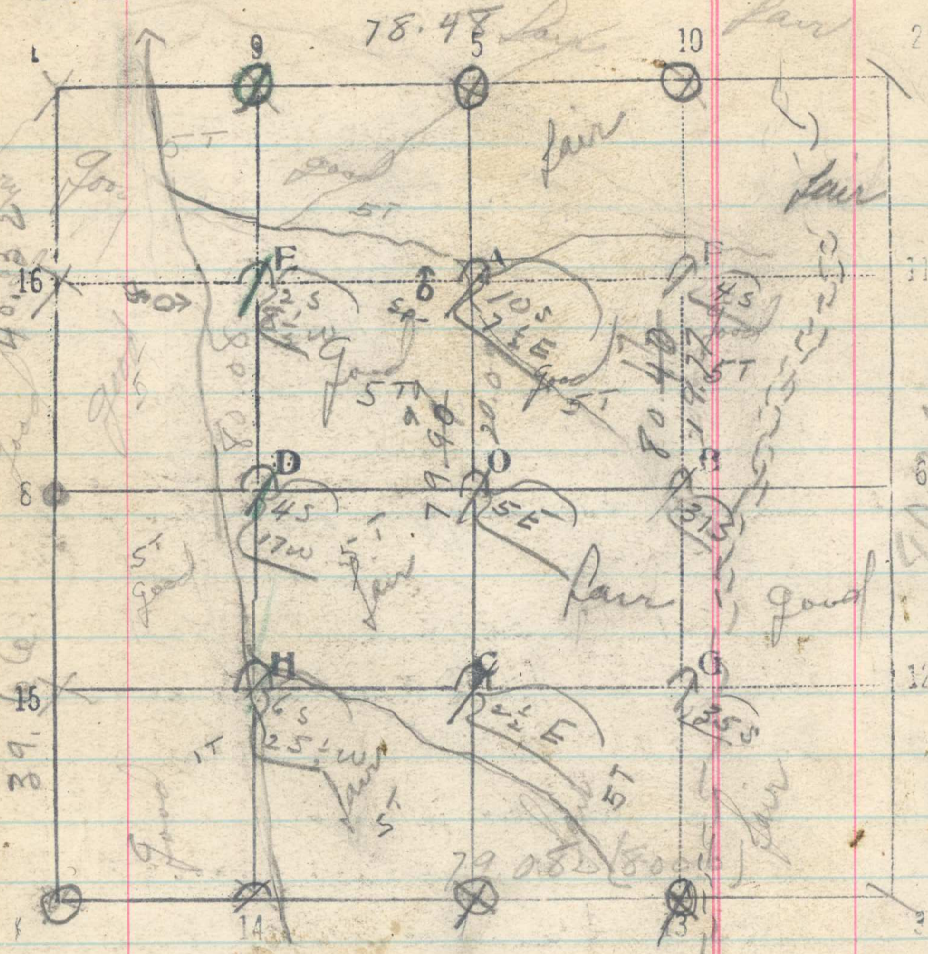


Sec. 13. 24 T. 2N R. 35E



530

- 6/24 line 1-2 East between 13-24
 20-40-60 (No sign of 1/4 cor)
 10 pulled shed North
 70 pulled N-S
 78.48 set stake No sign of change corner
 78.48 c.c. 13-24 bears N 24 W
 7/22 line 10-13 South thru East half
 20-40-60
 80.48 1/16 cor. 13 on line
 7/22-23 line 1-5 North thru center
 20-40-60
 14 Ravine Sheds N 70 W.
 57 Ravine N 10 W. 63 Ravine west
 79.99 1/4 cor bears E 10 W
 7/22 line 9-14 South thru West half
 20-40-60
 23 Ravine Sheds N 10 W,
 80.88 1/16 cor. 14 bears W 8 4 W.