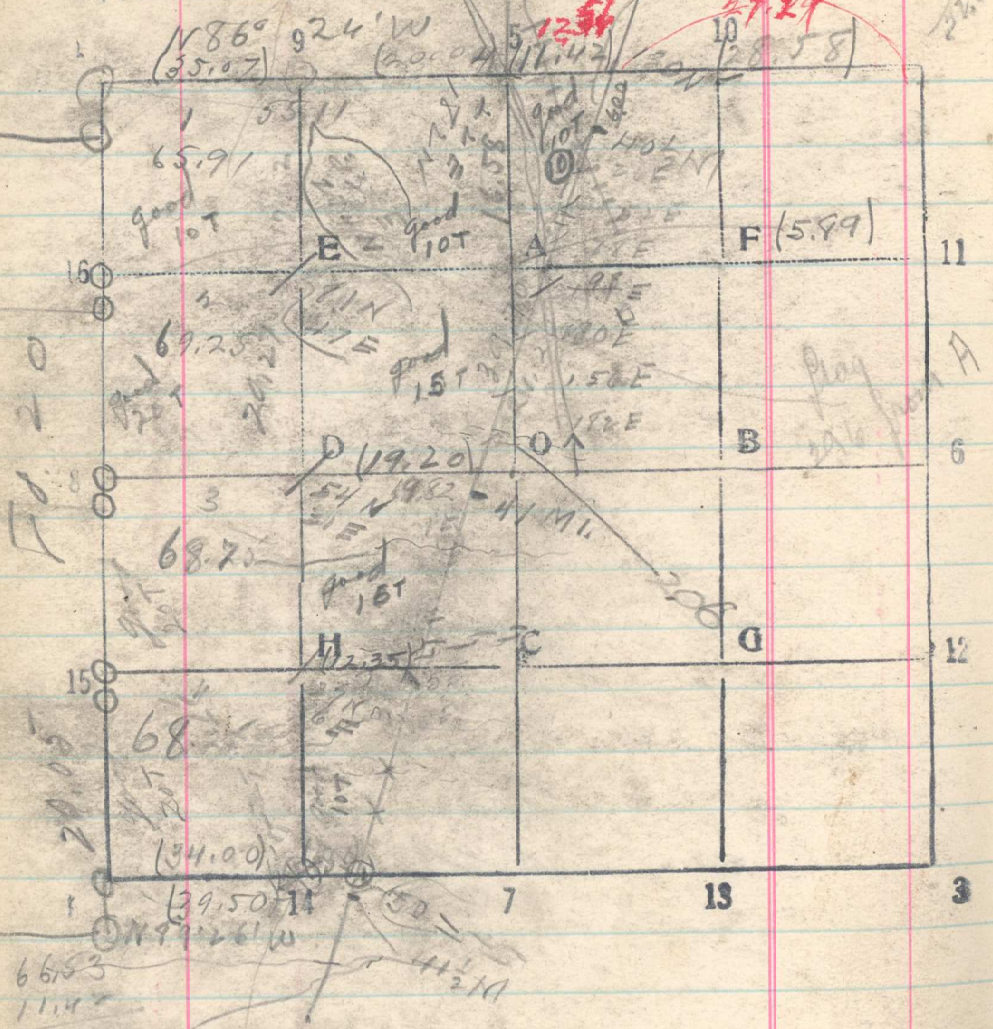


Sec. 19

T. 21 N. R. 36 E.

568



66.53  
11.11  
55.11  
20.09  
95.07

Point for cor. 14 is at c.c. bet

- 12/1 South along boundary from 40 1/2 Mi.  
Set 5 ch. points  
39.70 41 Mi. post bears E. 208 lbs.
- 11 12/2 Continue line south along edge from  
41 Mi. post with B.S. on 40 1/2 Mi. post.  
Set 5 ch. points  
38.74 C. C. Sec. 19 + 30 bears E 70 lbs.
- 12/5 Continue C.C. from 18 + 19  
18 + 19 from 27 0 miles  
Irregularity from 39 + 40  
6440 Long 1/2 sec 9 bears E 16 lbs  
9466 Sec. Cor. 19 + 30 bears E 34 lbs  
12/7 West from C.C. 19 + 30  
Set 5 50  
3885 Sec cor. 19 + 30 bears S 6 lbs  
12/4 Lule 14 + 9 North then west with  
Set 20 - 40 - 60  
78.70 1/10 sec 9 bears E 62 lbs  
1084