

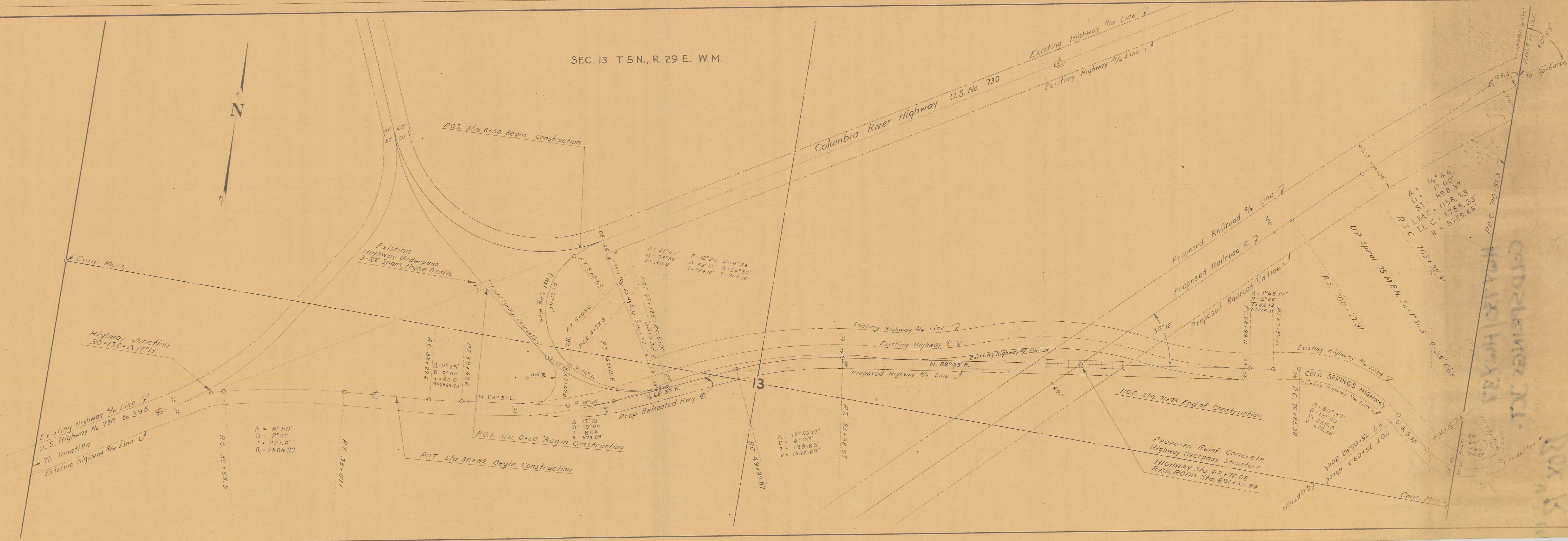
4-18

OREGON STATE HIGHWAY DEPARTMENT  
 RELOCATED LINE AT  
**COLD SPRINGS JUNCTION**  
 PENDLETON - COLD SPRINGS HIGHWAY  
 UMATILLA COUNTY

SCALE: 1" = 200'      OCTOBER 1950

DWG. NO. 10C-4-18

SEC. 13 T. 5 N., R. 29 E. W.M.



COLD SPRINGS JCT.  
 Box 15