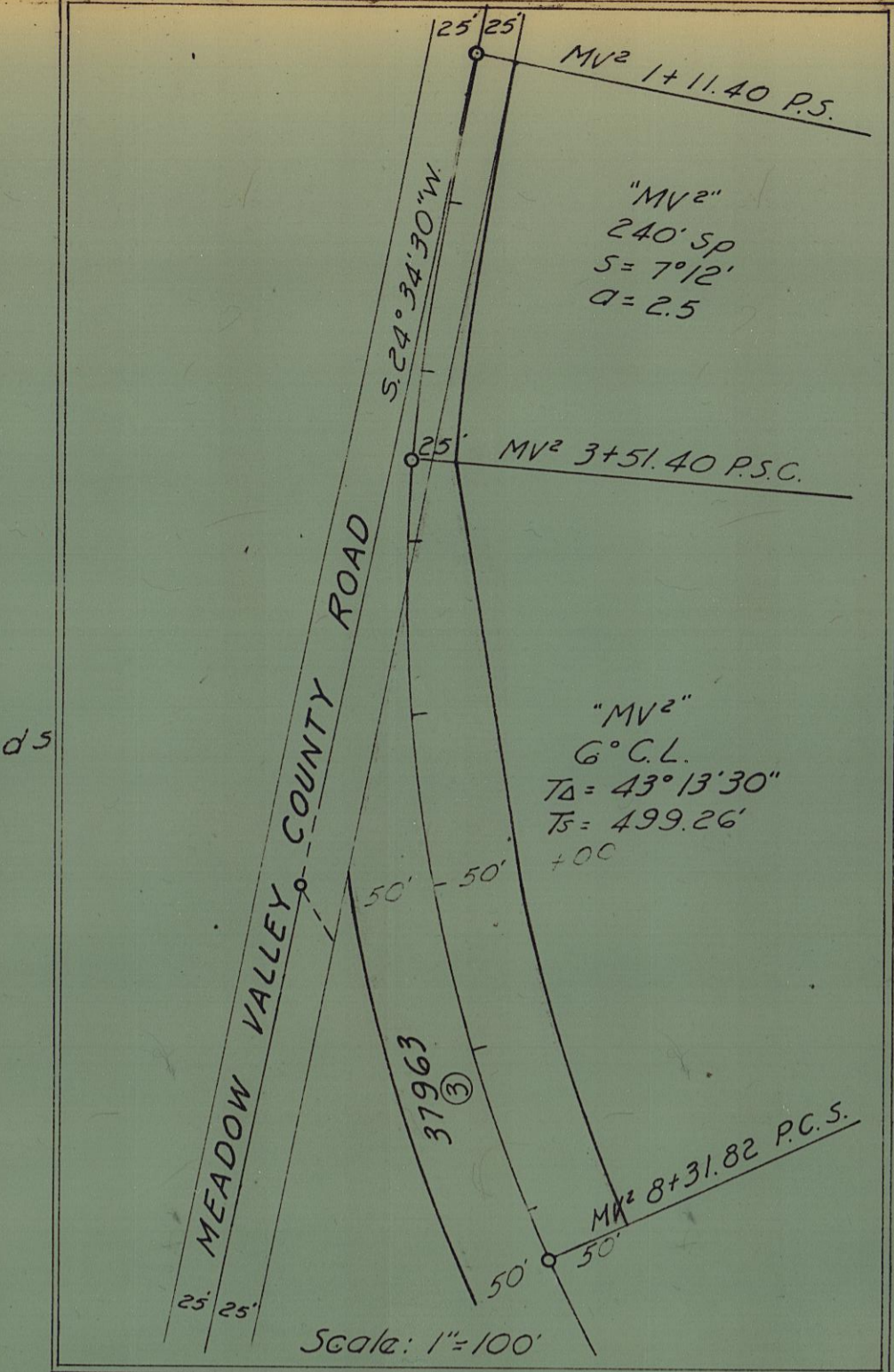
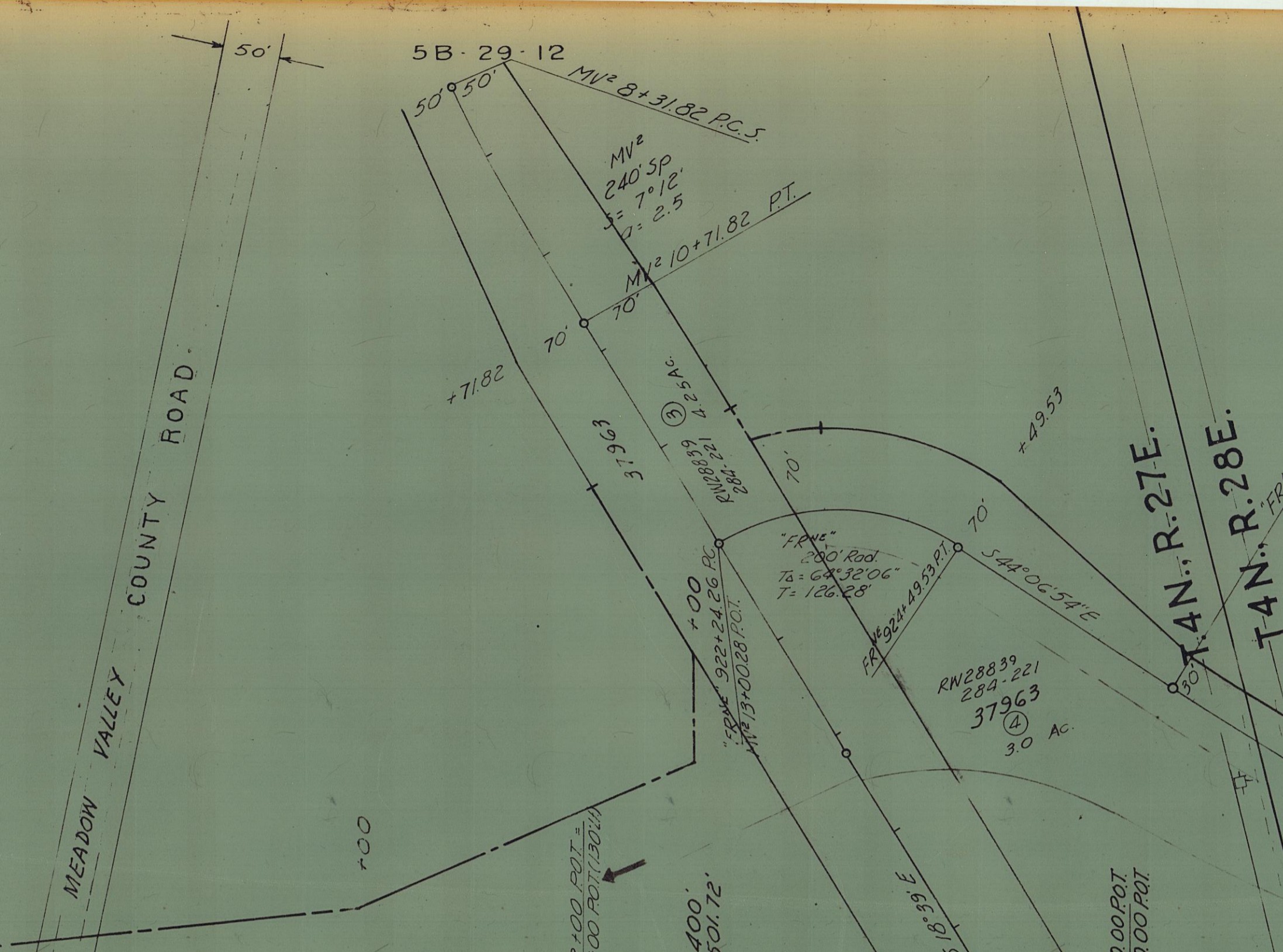


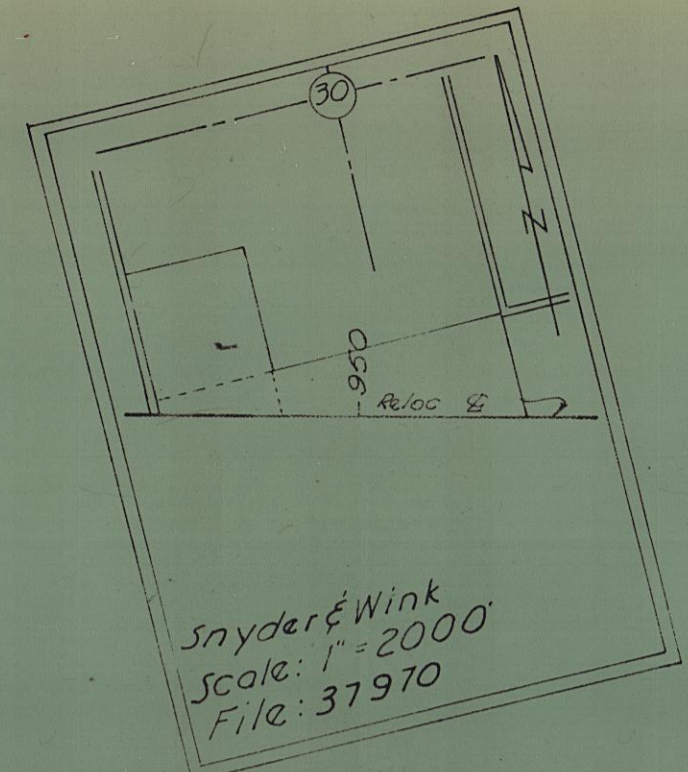
R. J. & D. S. Bounds
233-599



SEE INSERT



D. D. Wink
&
E. P. Snyder
274-581



Donald D. Wink
&
Everett R. Snyder

S. 76°19' E. (True)

37963
RW 28839
2.8 Ac.
284-221
5.15 Ac. RT.

37965
RW 28839
2.8 Ac.
284-221
5.15 Ac. RT.

37968
3.85 Ac.
Deed RW 27321
284-441

Deed RW 27932
285-657

37991
392 Ac.
140 Ac. RT.

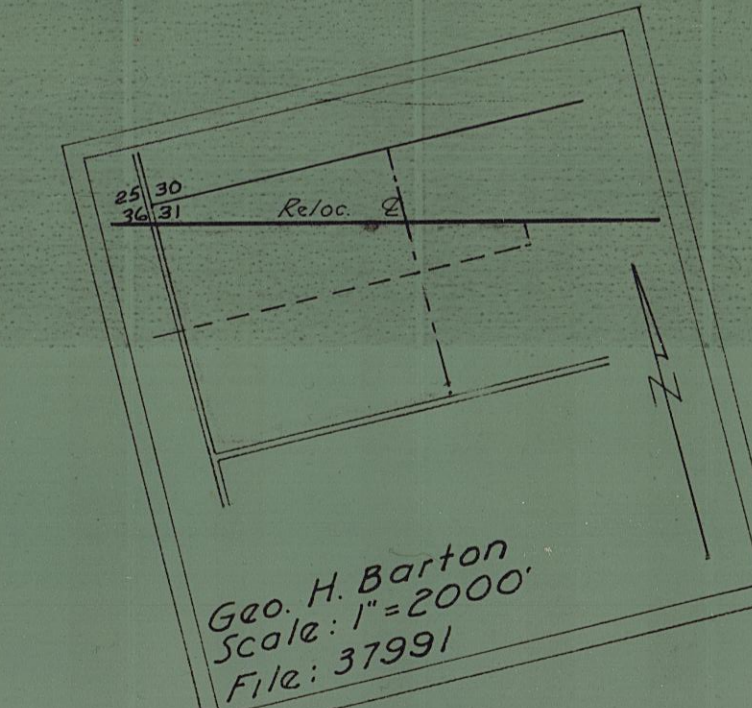
160-145
Deed RW 6069
Except 24' canal R/W

E. Hulit, et vir
225-689

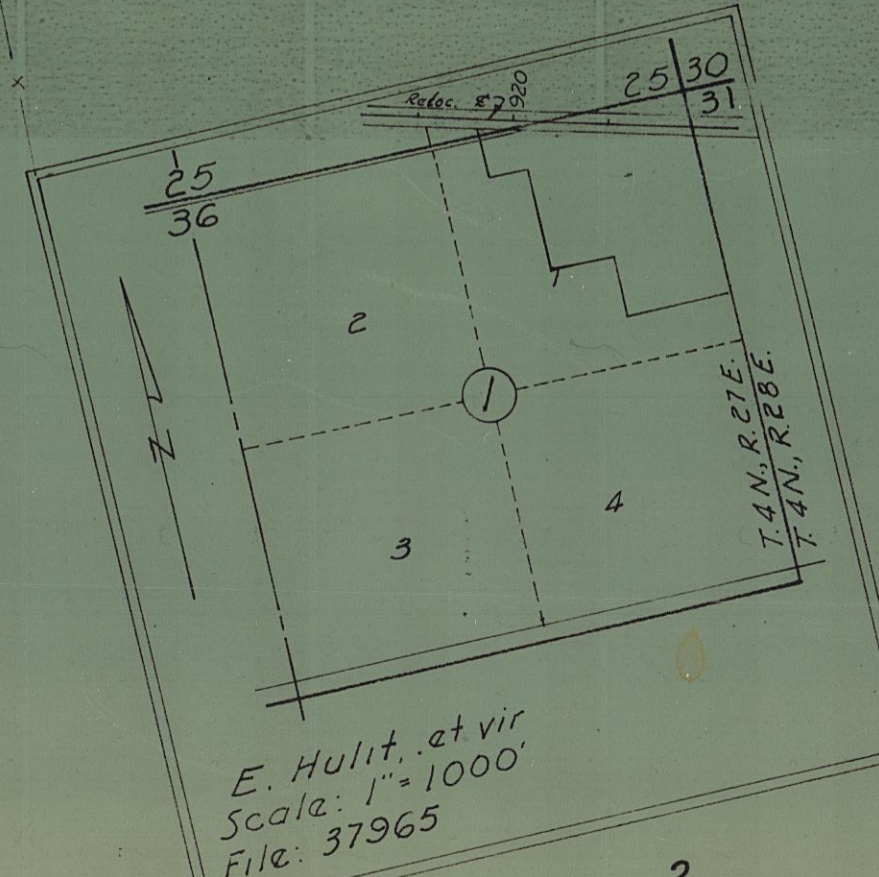
Dwight C. Hulit
213-180

L. G. & P. C. Hitts
259-121

G. F. & M. Vears
239-33
247-666
George H. Barton
214-711



MEADOW VALLEY



2

1