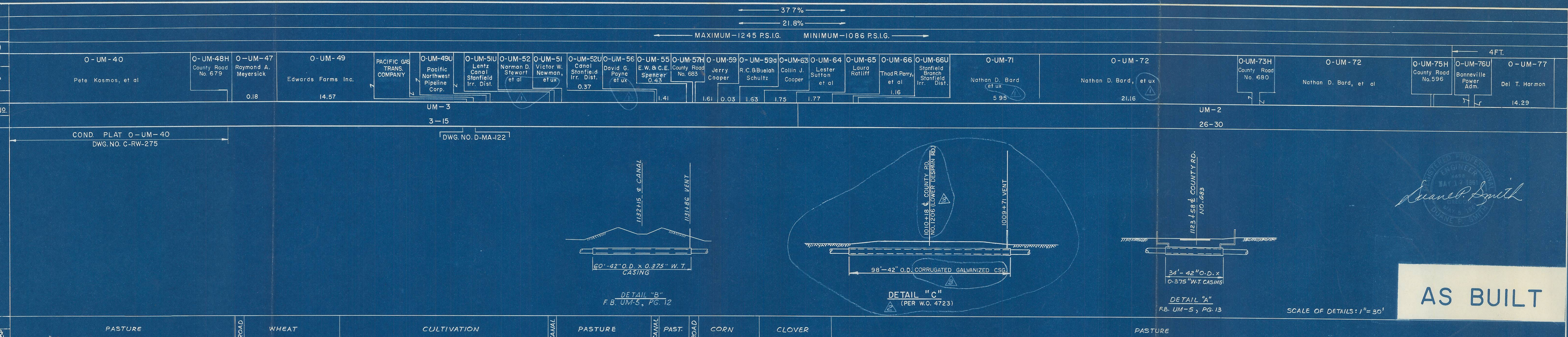


ALIGNMENT DETAILS

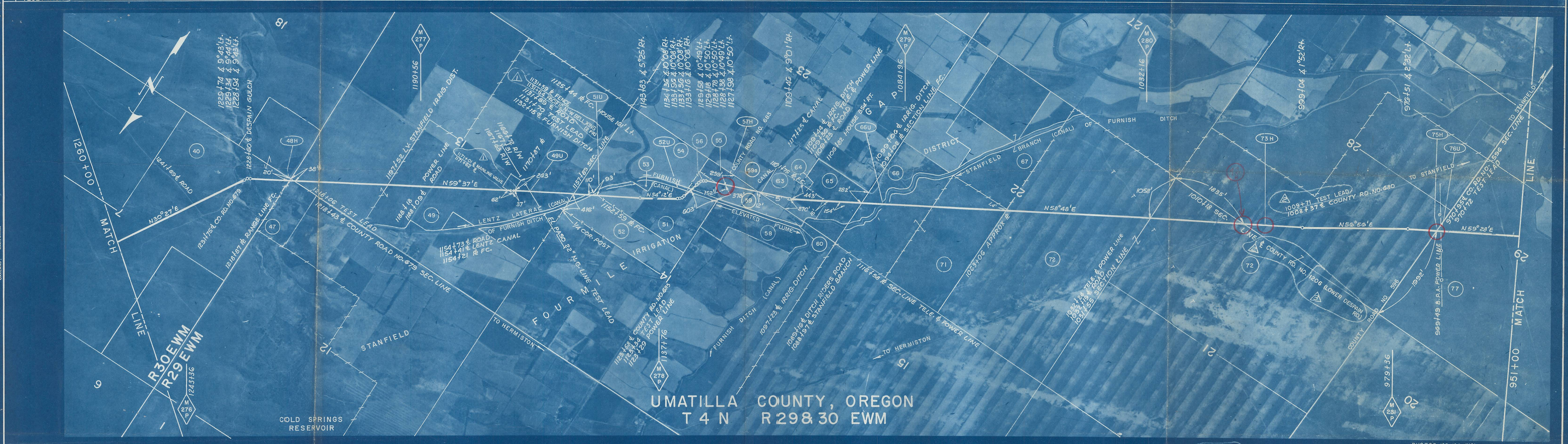


Engineer Seal and Signature: Sean G. Smith, License No. 683

AS BUILT

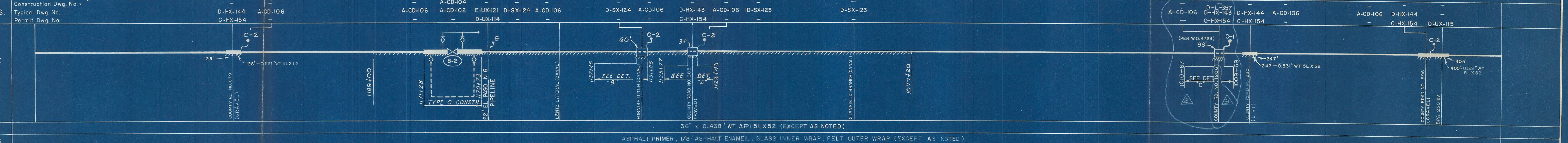
SCALE OF DETAILS: 1"=30'

Hammon, Jensen & Wallen



PHOTOS - 65, 69 INCL.

CONSTRUCTION DETAILS



MAINLINE BILL OF MATERIALS		STA. 951+00 TO STA. 1260+00	
0.438" W.T. PIPE	30,065 FT.	TEST LEADS, C-2	4 EACH
0.531" W.T. PIPE	780 FT.	CASING, 42" O.D. X 0.344" W.T.	0 FT.
SINGLE CT & DBLE WRAP	18,340 FT.	CASING, 42" O.D. X 0.375" W.T.	84 FT.
DBLE CT & DBLE WRAP	12,058 FT.	VENT PIPE, 3" SCHED. 40	56 FT.
TEST LEADS, TYPE "E"	1 EACH	INSULATORS	31 EACH
TEST LEADS, C-1	6 EACH	EIND SEALS	1 EACH
TYPE C CONSTRUCTION	55 FT. (SEE DWG. 46, SH.2)		

NO.	DATE	DESCRIPTION	APPRD.
3	4-4-69	REVISED AS FLAGGED	
2	2-28-69	REVISED PER W.O. 4723	
1	3-19-68	ADDED STATIONING FOR VALVE B-2, PACIFIC	
0	5-1-62	AS BUILT, REV. DWG. NUMBERS	ATP

NO.	DATE	DESCRIPTION	APPRD.
3	4-4-69	REVISED AS FLAGGED	
2	2-28-69	REVISED PER W.O. 4723	
1	3-19-68	ADDED STATIONING FOR VALVE B-2, PACIFIC	
0	5-1-62	AS BUILT, REV. DWG. NUMBERS	ATP

APPROVED BY		GM	
[Signature]	[Signature]	BY	DR. KAYE
		CH.	F.E.M.
		O.K.	A.T.T.
		DATE	5-29-59
		SCALE	1"=1000' APPROX.

36" PIPELINE
M.P. 275.7 to M.P. 281.5
UMATILLA COUNTY, OREGON

PACIFIC GAS TRANSMISSION COMPANY
SAN FRANCISCO, CALIF.

BECHTEL CORPORATION AGENT	
SAN FRANCISCO	CALIF.
BILL OF MATERIALS	
SHEET NO. 49 OF 106 SHEETS	
DRAWING NUMBER CHANGE	
B-AL-149 3	
(349)	