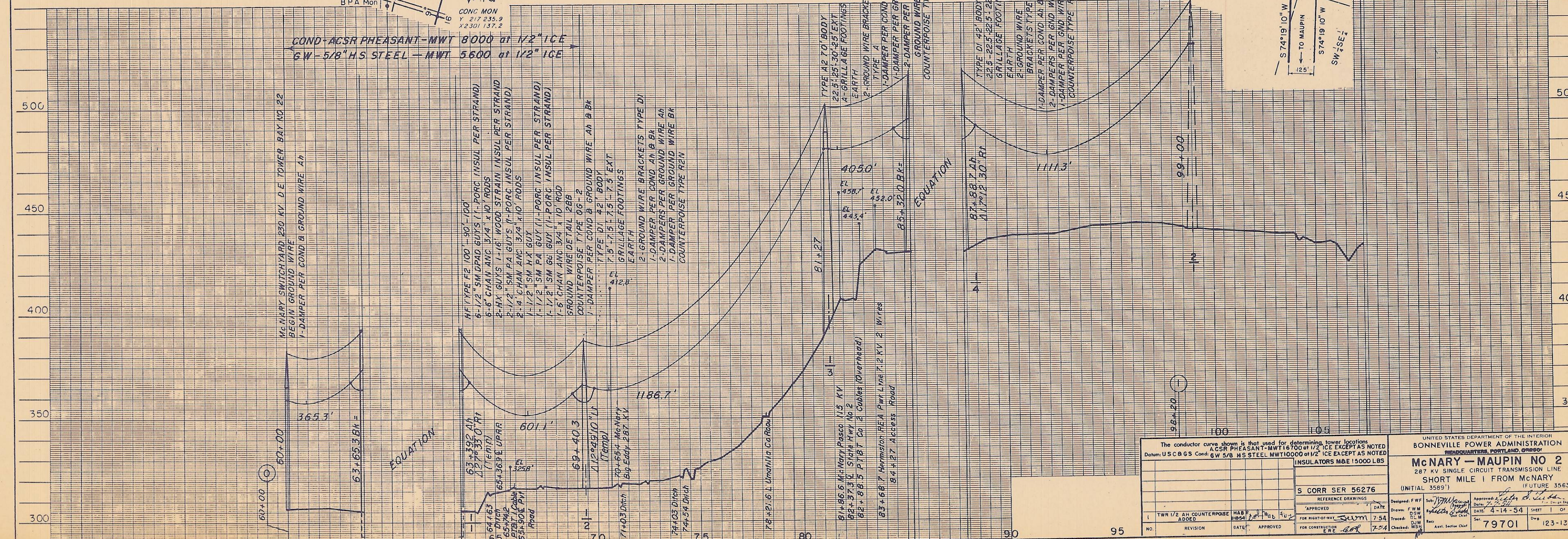
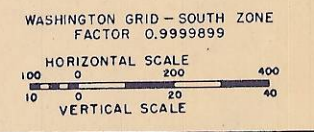
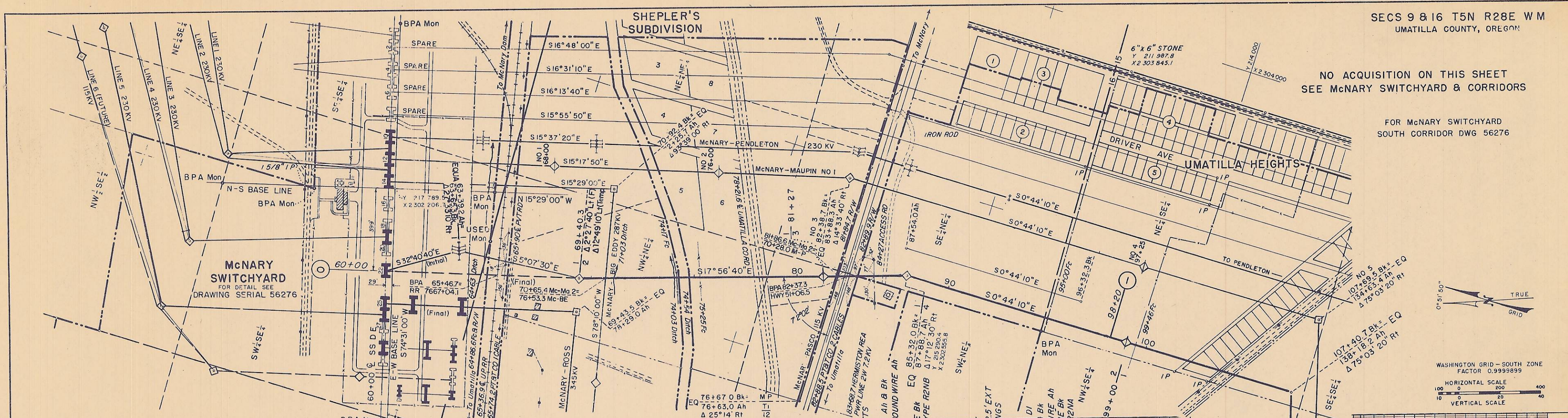


NO ACQUISITION ON THIS SHEET
SEE McNARY SWITCHYARD & CORRIDORS

FOR McNARY SWITCHYARD
SOUTH CORRIDOR DWG 56276



The conductor curve shown is that used for determining tower locations
A CSR PHEASANT-MWT 16700 at 1/2 ICE EXCEPT AS NOTED
Datum: U.S.C. & G.S. Cond: 6 W 5/8 HS STEEL MWT 10000 at 1/2 ICE EXCEPT AS NOTED

INSULATORS M&E 15000 LBS

S CORR SER 56276

REFERENCE DRAWINGS

NO.	REVISION	DATE	APPROVED
1	TWR 1/2 AH COUNTERPOISE ADDED	7/54	[Signature]

DESIGNED: F.W.F. DATE: 7/54
DRAWN: F.W.M. DATE: 7/54
CHECKED: D.J.M. DATE: 7/54
APP'D: [Signature] DATE: 7/54

UNITED STATES DEPARTMENT OF THE INTERIOR
BONNEVILLE POWER ADMINISTRATION
PORTLAND, OREGON

McNARY - MAUPIN NO 2
287 KV SINGLE CIRCUIT TRANSMISSION LINE
SHORT MILE 1 FROM McNARY
(INITIAL 3589') (FUTURE 3563')

79701 123-13-0