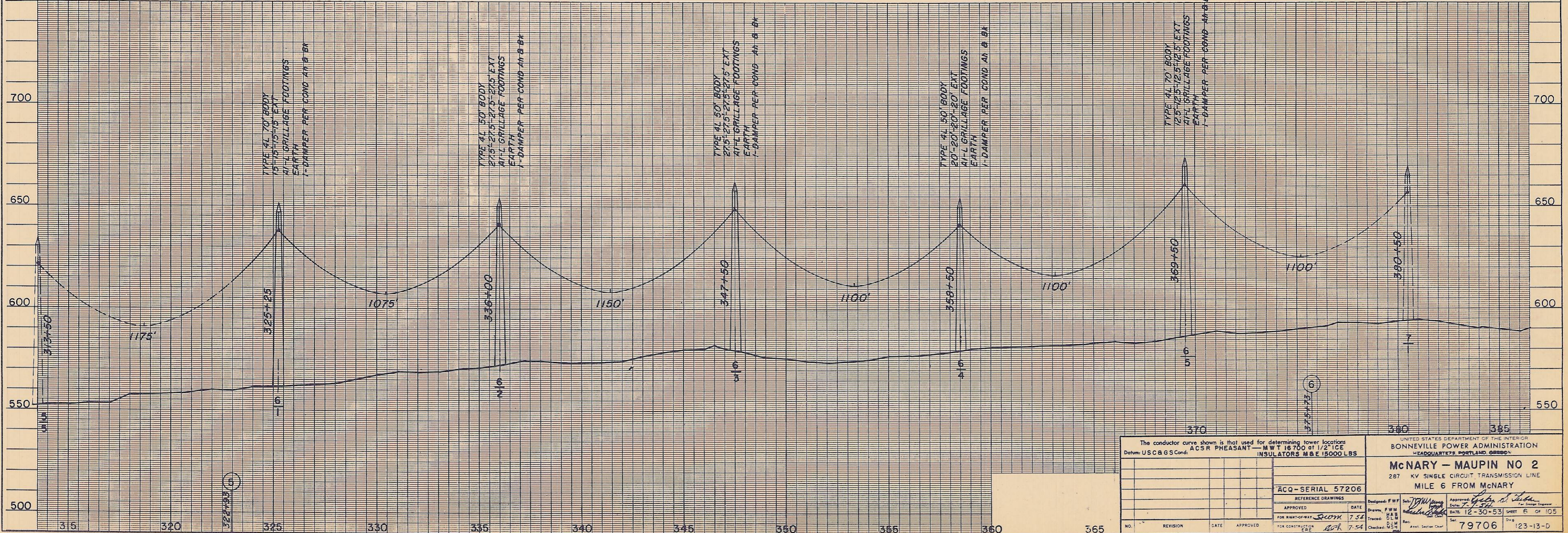
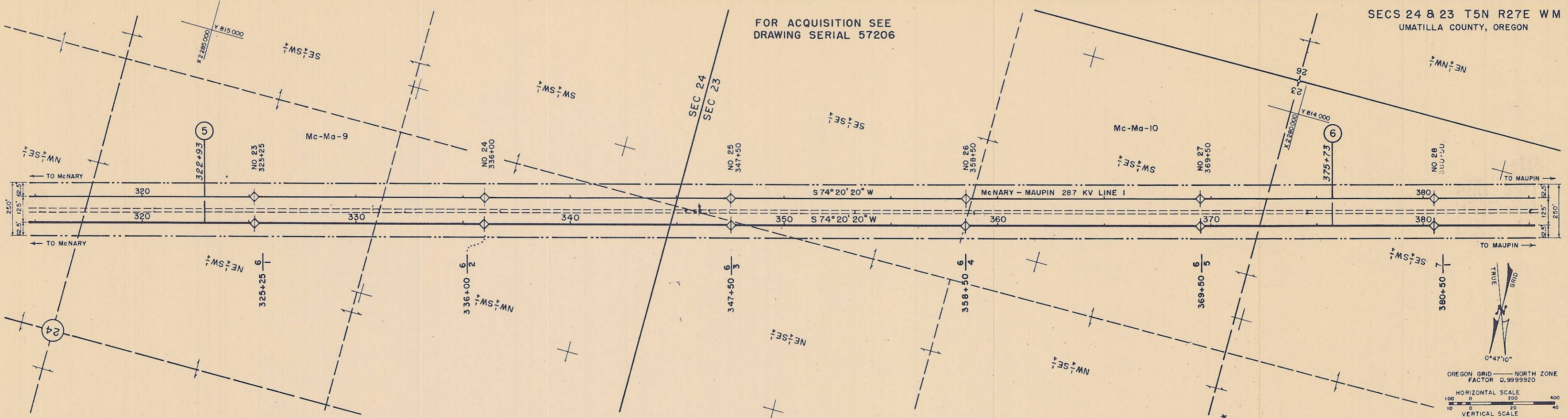


FOR ACQUISITION SEE
DRAWING SERIAL 57206

SECS 24 & 23 T5N R27E WM
UMATILLA COUNTY, OREGON



The conductor curve shown is that used for determining tower locations. ACSR PHEASANT - MWT 16700 at 1/2" ICE INSULATORS MBE 15000 LBS.		UNITED STATES DEPARTMENT OF THE INTERIOR BONNEVILLE POWER ADMINISTRATION HEADQUARTERS, PORTLAND, OREGON	
ACQ-SERIAL 57206 REFERENCE DRAWINGS		McNARY - MAUPIN NO 2 287 KV SINGLE CIRCUIT TRANSMISSION LINE MILE 6 FROM McNARY	
APPROVED <i>[Signature]</i>	DATE 7-54	DESIGNED BY F.W.F.	APPROVED BY <i>[Signature]</i>
FOR RIGHT-OF-WAY EBE	DATE 7-54	DRAWN BY F.W.F.	DATE 12-30-53
FOR CONSTRUCTION EBE	DATE 7-54	CHECKED BY F.W.F.	SHEET 6 OF 105
NO. REVISION DATE APPROVED		79706 123-13-D	