

SECS 14 & 15 T5N R28E WM
UMATILLA COUNTY, OREGON

LM-JD-274
UNITED STATES OF AMERICA
(DEPARTMENT OF THE ARMY)
S 1/2 S 1/2 & PART OF NW 1/4 SEC 14
R/W & LENGTH 5395'
20.4 ACRES
STA 226+73.0 TO STA 172+78.4

LM-JD-274A
HERMISTON IRRIG DIST
"O" CANAL
STA 184+37.0

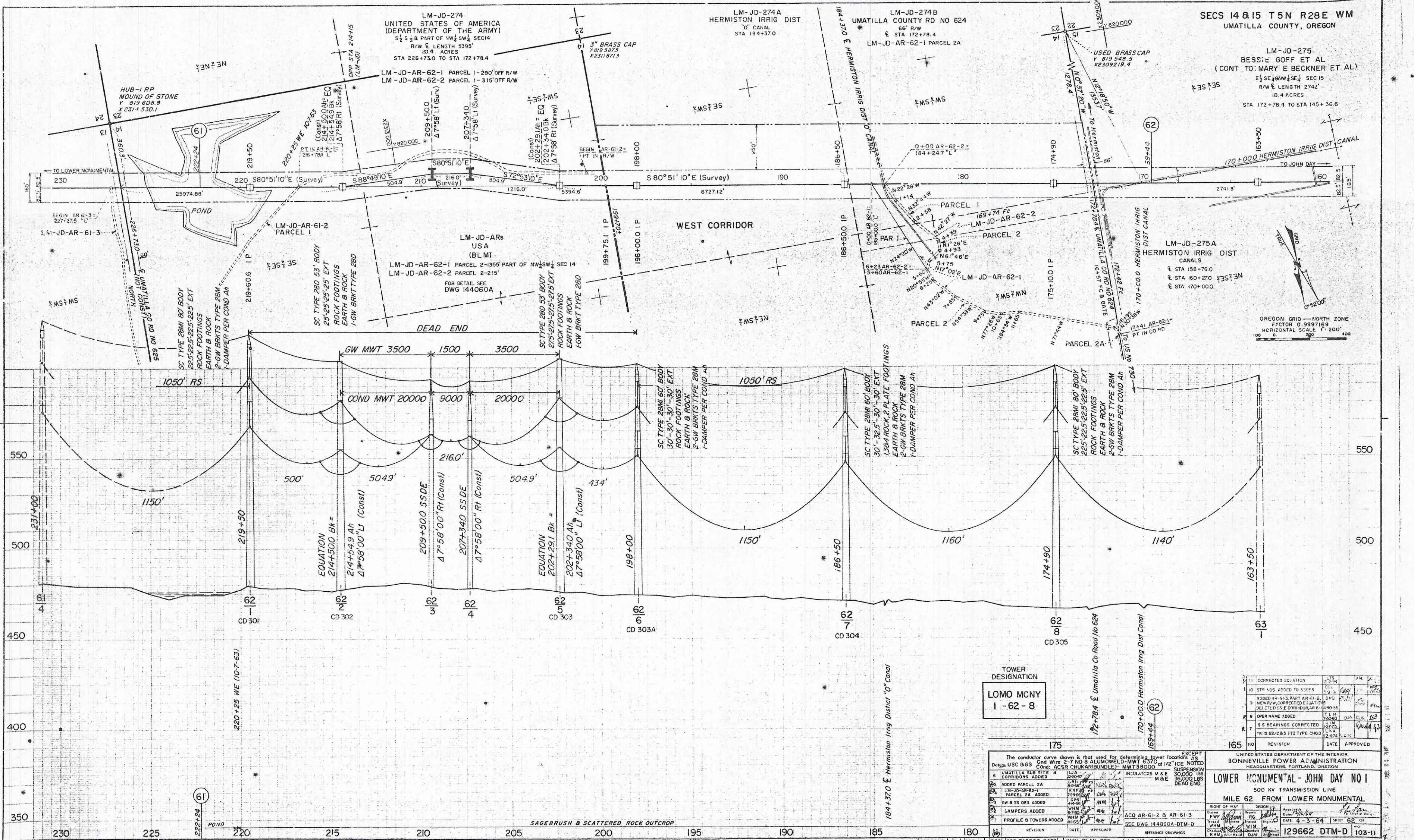
LM-JD-274B
UMATILLA COUNTY RD NO 624
66' R/W
E STA 172+78.4
LM-JD-AR-62-1 PARCEL 2A

LM-JD-275
BESSIE GOFF ET AL
(CONT TO: MARY E BECKNER ET AL)
E 1/2 SE 1/4 NW 1/4 SEC 15
R/W & LENGTH 2742'
10.4 ACRES
STA 172+78.4 TO STA 145+36.6

LM-JD-ARs
USA
(BLM)
LM-JD-AR-62-1 PARCEL 2-1355' PART OF NW 1/4 SEC 14
LM-JD-AR-62-2 PARCEL 2-215'
FOR DETAIL SEE
DWG 144060A

LM-JD-275A
HERMISTON IRRIG DIST
CANALS
E STA 158+76.0
E STA 160+270
E STA 170+000

OREGON GRID - NORTH ZONE
FACTOR 0.9997169
HORIZONTAL SCALE 1" = 200'



TOWER DESIGNATION
LOMO MCNY
1-62-8

1	UMATILLA SUB SITE & CORRIDORS ADDED	1/24	1/24
2	ADDED PARCEL 2A	1/24	1/24
3	LM-JD-AR-62-1 PARCEL 2A ADDED	1/24	1/24
4	GW B SS DES ADDED	1/24	1/24
5	LAMPERS ADDED	1/24	1/24
6	PROFILE & TOWERS ADDED	1/24	1/24

11	CORRECTED EQUATION	LTS	2/23/64	1/24
10	STR NOS ADDED TO SSES	DMB	2/23/64	1/24
9	ADDED AR-61-2, DM3	DMB	2/23/64	1/24
8	OPER NAME ADDED	DMB	2/23/64	1/24
7	SS BEARINGS CORRECTED	DMB	2/23/64	1/24
6	TW IS 62/285 FTD TYPE CHGD	DMB	2/23/64	1/24
5	REVISION	DATE	APPROVED	

EXCEPT UNITED STATES DEPARTMENT OF THE INTERIOR
BONNEVILLE POWER ADMINISTRATION
HEADQUARTERS, PORTLAND, OREGON
LOWER MCNUMENTAL - JOHN DAY NO 1
600 KV TRANSMISSION LINE
MILE 522 FROM LOWER MONUMENTAL
RIGHT OF WAY DESIGN BY: [Signature]
APPROVED BY: [Signature]
DATE: 4-3-64 SHEET 62 OF 62
129662 DTM-D 103-11