

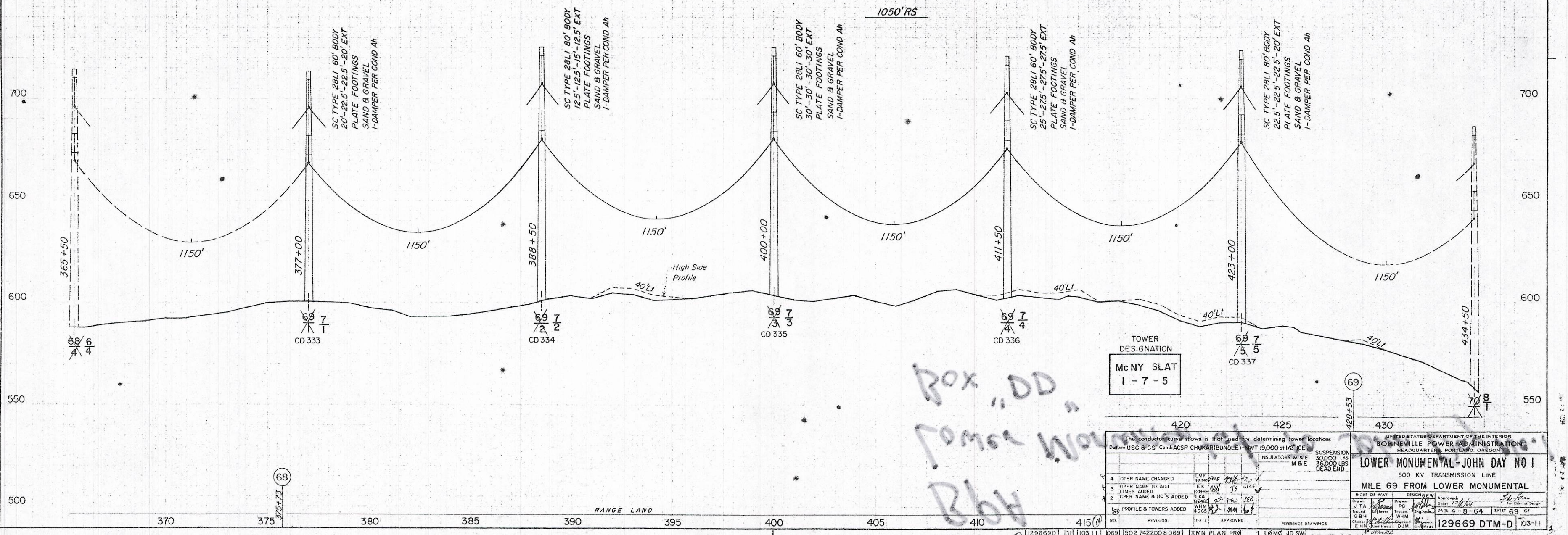
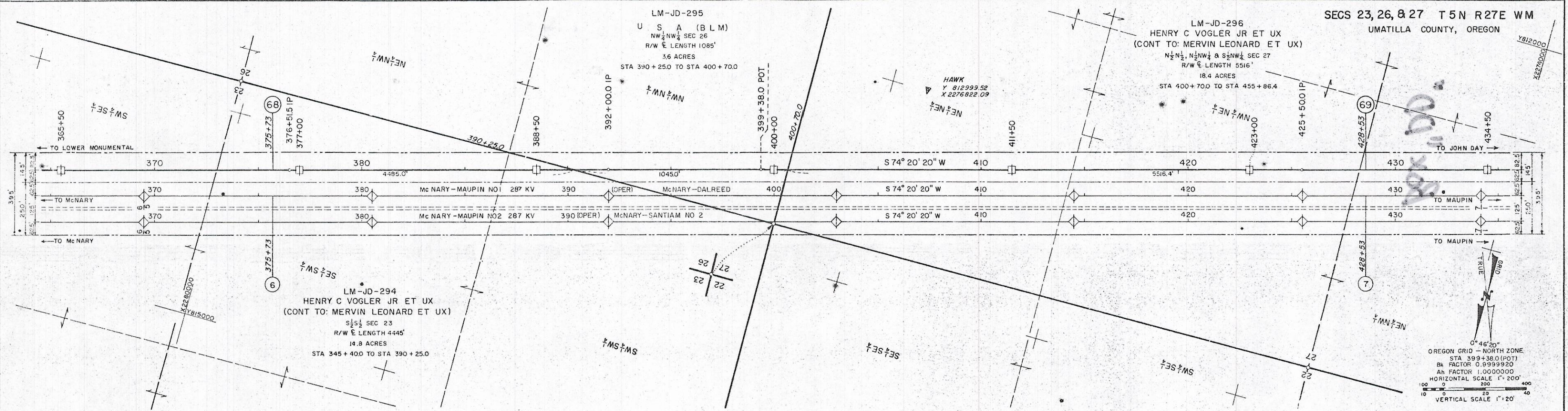
LM-JD-295
U S A (B L M)
NW 1/4 NW 1/4 SEC 26
R/W & LENGTH 1085'
3.6 ACRES
STA 390+25.0 TO STA 400+70.0

LM-JD-296
HENRY C VOGLER JR ET UX
(CONT TO: MERVIN LEONARD ET UX)
N 1/2 N 1/2, N 1/2 NW 1/4 & S 1/2 NW 1/4 SEC 27
R/W & LENGTH 5516'
18.4 ACRES
STA 400+70.0 TO STA 455+86.4

LM-JD-294
HENRY C VOGLER JR ET UX
(CONT TO: MERVIN LEONARD ET UX)
S 1/2 SEC 23
R/W & LENGTH 4445'
14.8 ACRES
STA 345+40.0 TO STA 390+25.0

HAWK
Y 812999.52
X 2276822.09

OREGON GRID - NORTH ZONE
STA 399+38.0 (POT)
BK FACTOR 0.999920
AN FACTOR 1.000000
HORIZONTAL SCALE 1" = 200'
VERTICAL SCALE 1" = 20'



Box "DD"
Lower Monumental
BBH

TOWER DESIGNATION
McNY SLAT
1-7-5

The conductor curve shown is that used for determining tower locations Datum: USC & GS Cond. ACSR CHUKAR(BUNDLE)-TWT 19,000 at 1/2" ICE		SUSPENSION 30,000 LBS 36,000 LBS DEAD END	
4 OPER NAME CHANGED 3 OPER NAME TO ADV 2 OPER NAME & NO'S ADDED 1 PROFILE & TOWERS ADDED	LMF 12/26/95 LKA 8/24/95 WHM 4/6/95	INSULATORS M & E MBE	BONNEVILLE POWER ADMINISTRATION HEADQUARTERS, PORTLAND, OREGON LOWER MONUMENTAL-JOHN DAY NO 1 500 KV TRANSMISSION LINE MILE 69 FROM LOWER MONUMENTAL
REVISION DATE APPROVED	DESIGNER DRAWN CHECKED DATE 4-8-64 SHEET 69 OF 103-11	1296690 103-11 069 502 742200 80693	OPER AS MILE 7 McNARY-SLATT NO1