

PLG-R-3 WYELP (MARY J. PATAWA) ET AL (ALLOTMENT U-76) S½ SEC 19 R/W & LENGTH 6.4 ACRES STA 152+74 TO OPP STA 179+21

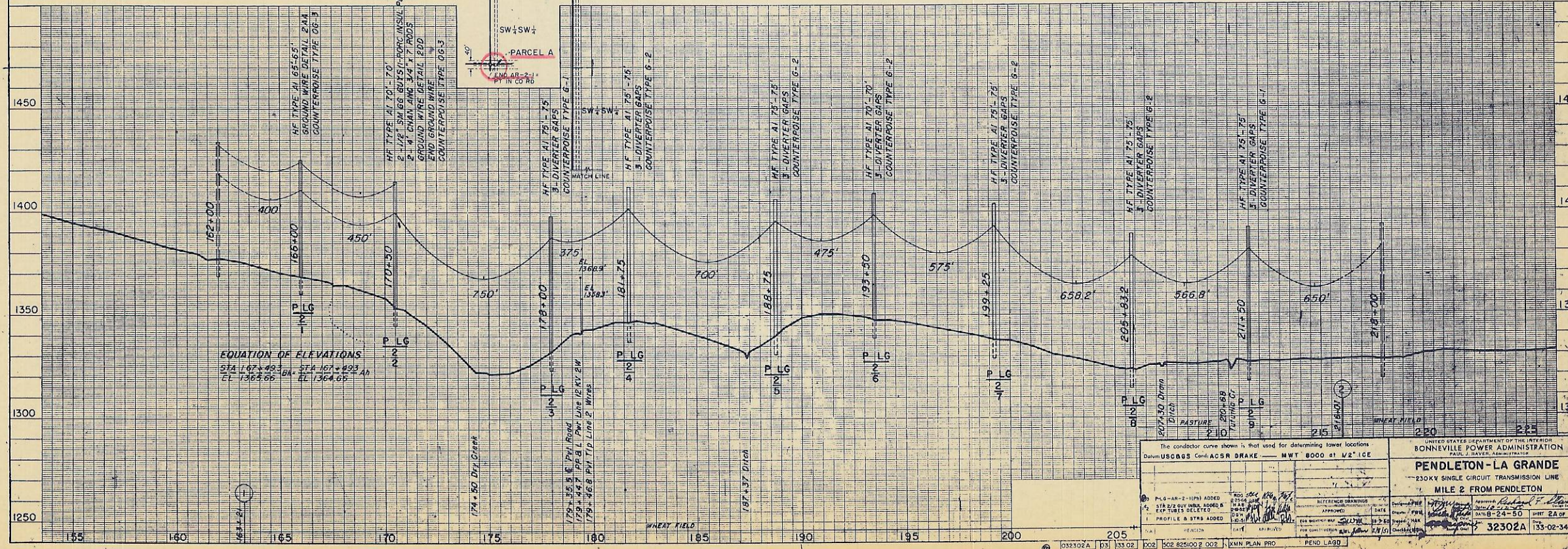
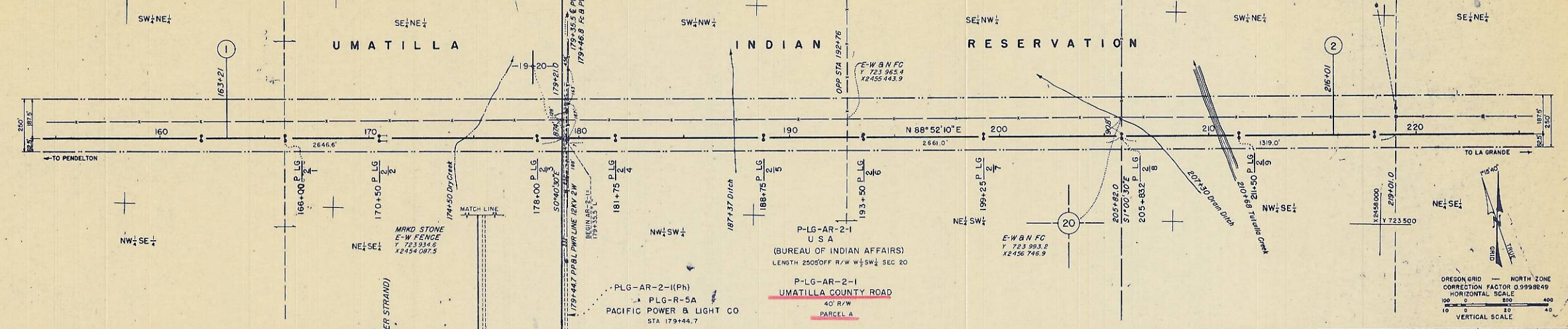
PLG-R-4 MICHAEL F. UMBARGER ET UX N½ SEC 19 & SW¼ NW¼ SEC 20 R/W & LENGTH 2647' 12.0 ACRES STA 152+74.4 TO STA 179+21.0 OPP STA 179+21 TO OPP STA 192+76

PLG-R-5 JOHN SAMPSON ET AL (ALLOTMENT U-41) N½ SW¼ SEC 20 R/W & LENGTH 2661' 9.1 ACRES STA 179+21.0 TO STA 205+82.0

PLG-R-6 WYELP (MARY J. PATAWA) ET AL (ALLOTMENT U-104) SE½ NW¼ SEC 20 R/W & LENGTH 3.0 ACRES STA 192+76 TO OPP STA 205+82

PLG-R-7 SUSIE (KROPLITS) (PART OF ALLOTMENT C-26) NW¼ SE¼ SEC 20 R/W & LENGTH 1319' 4.6 ACRES STA 205+82.0 TO STA 216+01.0

SECS 19 & 20 T2N R33E WM UMATILLA COUNTY, OREGON



EQUATION OF ELEVATIONS
 STA 167+49.3 BK STA 167+49.3 AN
 EL 1365.66 LL 1364.65

The conductor curve shown is that used for determining tower locations
 Data: USCGS Cont. ACSR DRAKE - MWT 8000 @ 1/2" ICE

UNITED STATES DEPARTMENT OF THE INTERIOR
 BONNEVILLE POWER ADMINISTRATION
 PAUL J. SAVER, ADMINISTRATOR

PENDLETON - LA GRANDE
 230KV SINGLE CIRCUIT TRANSMISSION LINE
 MILE 2 FROM PENDLETON

PLG-AR-2-1 (PH) ADDED
 STA 218+00 TO STA 218+00
 EXP. TUBES DELETED
 1 PROFILE & STRB ADDED

DATE: 11/15/02
 DRAWN BY: [Signature]
 CHECKED BY: [Signature]
 APPROVED BY: [Signature]

32302A 133-02-340-09