

FOR OWNERSHIP DATA SEE  
DRAWING SERIAL 13214

SECS 3 & 2 T1N R34E WM  
UMATILLA COUNTY, OREGON

OTIS HALFMOON &  
MARY J HALFMOON

WILLIE WILLIAMS

JOHN D ANKENY AS AGENT FOR THE  
SHAREHOLDERS OF THE FIRST NATIONAL  
BANK OF PENDLETON

CROSSING DRAWING  
SERIAL 32362

SE 1/4 NW 1/4

SW 1/4 NE 1/4

SE 1/4 NE 1/4

SW 1/4 NE 1/4

SE 1/4 NE 1/4

SW 1/4 NW 1/4

SE 1/4 NW 1/4

SW 1/4 NE 1/4

DAN WHITE

NE 1/4 SE 1/4

ELLEN KASH KASH

SAMUEL KASH KASH

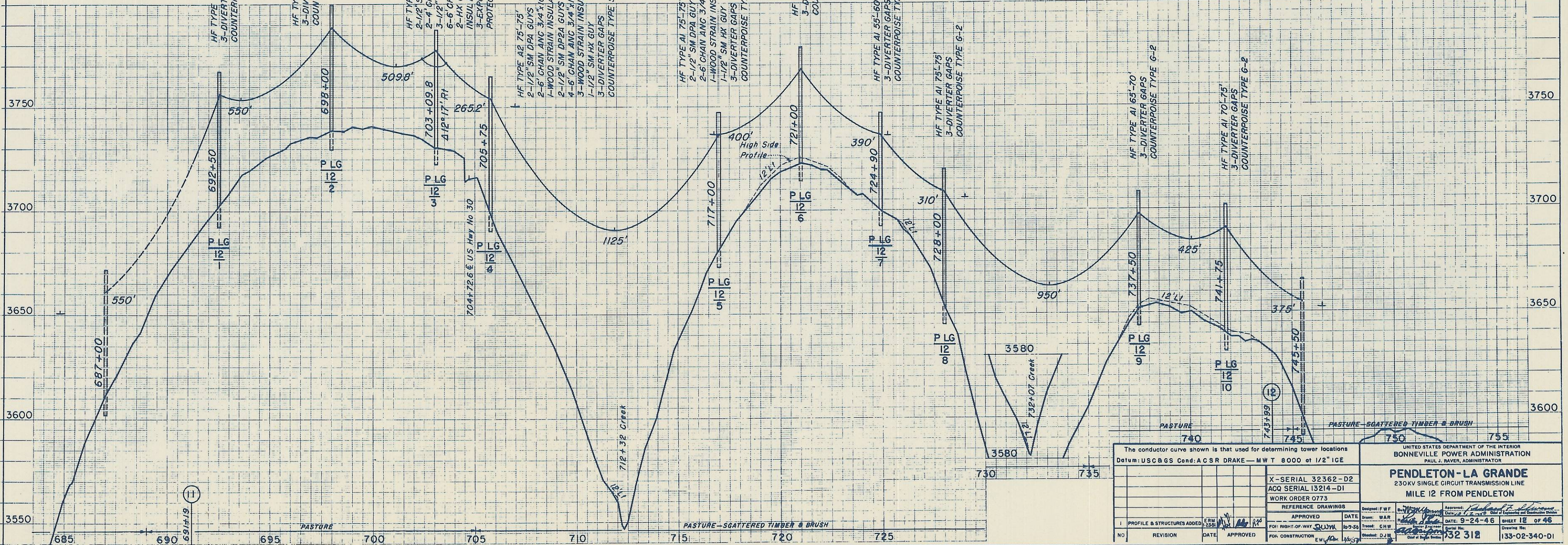
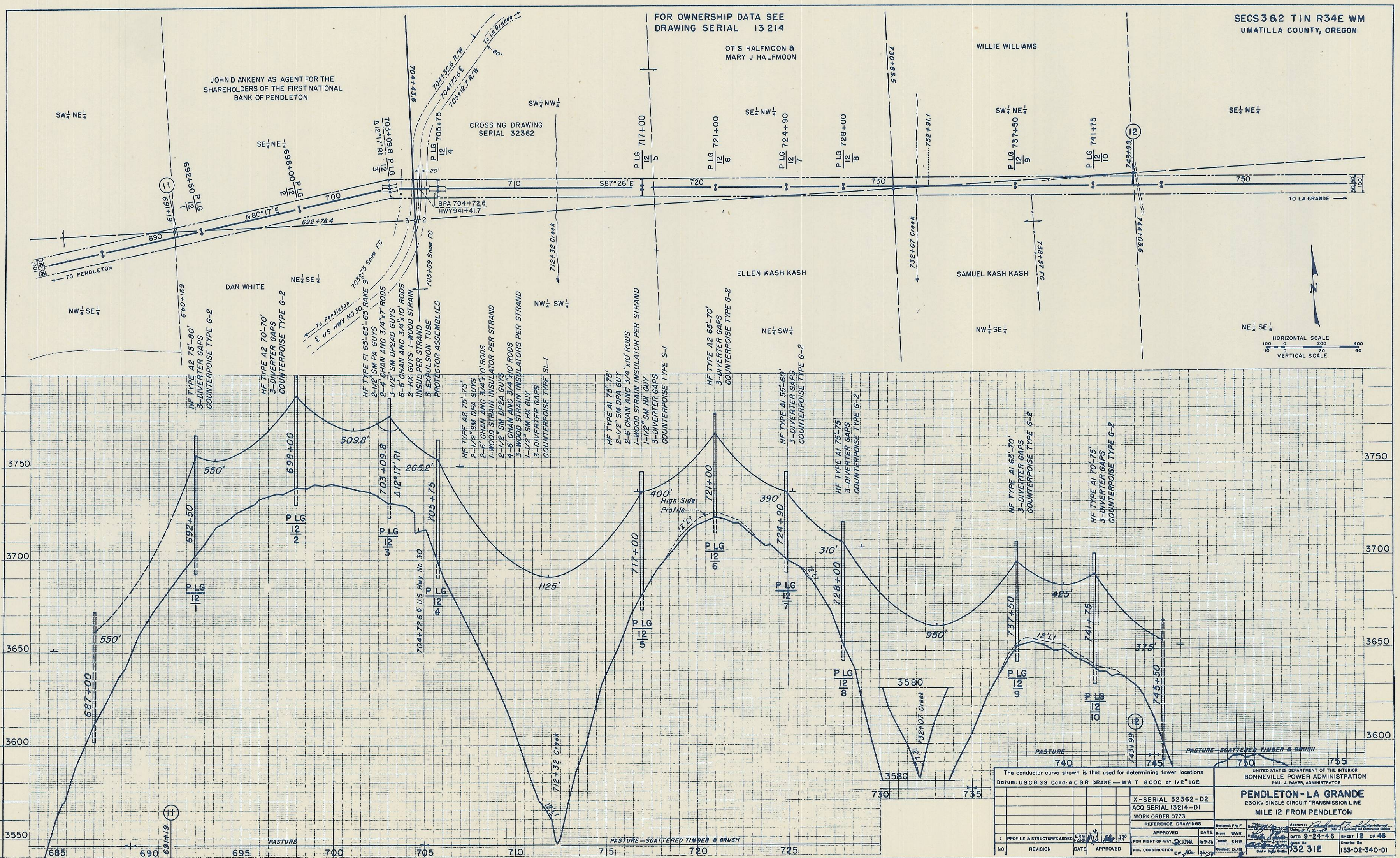
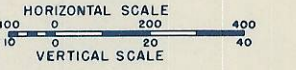
NW 1/4 SE 1/4

NE 1/4 SE 1/4

NE 1/4 SW 1/4

NW 1/4 SE 1/4

NE 1/4 SE 1/4



The conductor curve shown is that used for determining tower locations Datum: USCGS Cond. A GSR DRAKE - MW T 8000 at 1/2" ICE		UNITED STATES DEPARTMENT OF THE INTERIOR BONNEVILLE POWER ADMINISTRATION PAUL J. RAVER, ADMINISTRATOR	
X-SERIAL 32362-D2 ACQ SERIAL 13214-D1 WORK ORDER 0773		<b>PENDLETON-LA GRANDE</b> 230KV SINGLE CIRCUIT TRANSMISSION LINE MILE 12 FROM PENDLETON	
APPROVED	DATE	DESIGNED: F.W.F.	APPROVED: [Signature]
FOR RIGHT-OF-WAY	DATE	DRAWN: WAR	DATE: 9-24-46
FOR CONSTRUCTION	DATE	TRACED: C.H.W.	SHEET 18 OF 46
NO	REVISION	CHECKED: D.J.M.	732 318