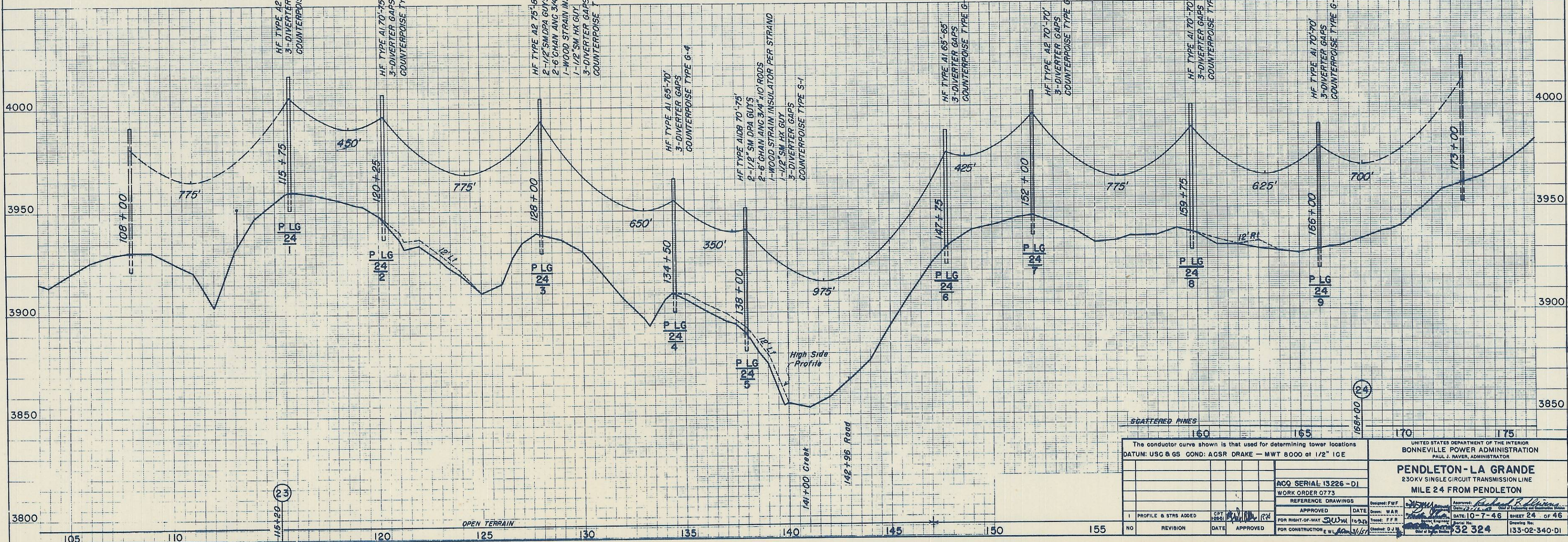
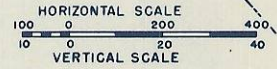
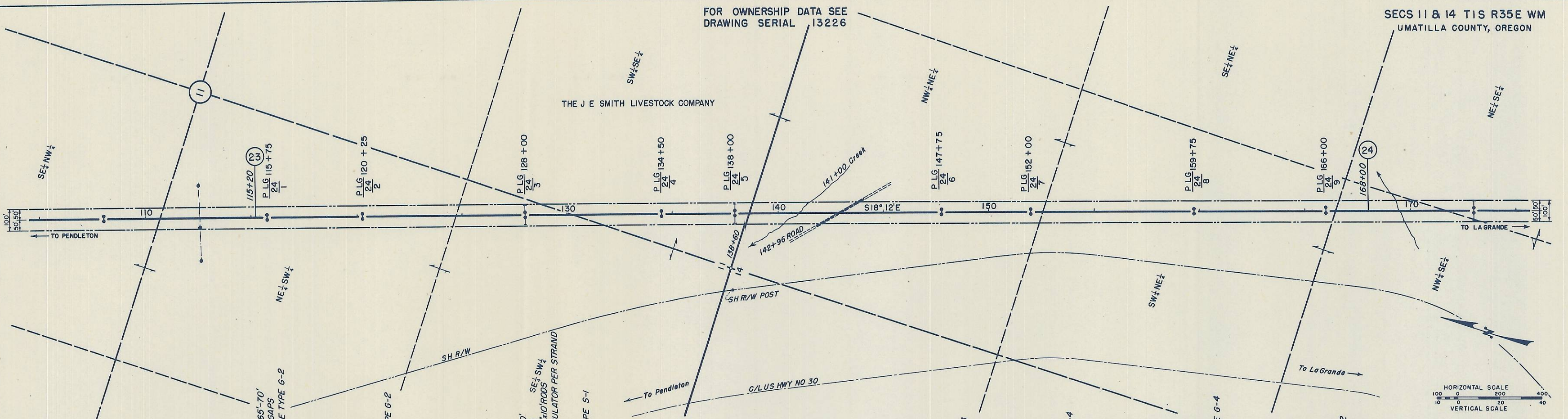


FOR OWNERSHIP DATA SEE
DRAWING SERIAL 13226

SECS 11 & 14 T1S R35E WM
UMATILLA COUNTY, OREGON

THE J E SMITH LIVESTOCK COMPANY



SCATTERED PINES 160 165 170 175	
The conductor curve shown is that used for determining tower locations DATUM: USC & GS COND: ACSR DRAKE - MWT 8000 of 1/2" ICE	
UNITED STATES DEPARTMENT OF THE INTERIOR BONNEVILLE POWER ADMINISTRATION PAUL J. RAVER, ADMINISTRATOR	
PENDELTON-LA GRANDE 230KV SINGLE CIRCUIT TRANSMISSION LINE MILE 24 FROM PENDELTON	
ACQ SERIAL 13226-DI WORK ORDER 0773	
REFERENCE DRAWINGS	
APPROVED	DATE
FOR RIGHT-OF-WAY	DATE
FOR CONSTRUCTION	DATE
DESIGNED: FWF DRAWN: WAR CHECKED: D.J.M.	APPROVED: <i>[Signature]</i> DATE: 10-7-46 SHEET 24 OF 46
NO. REVISION DATE APPROVED	32 324 133-02-340-DI