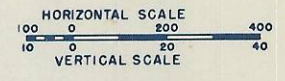
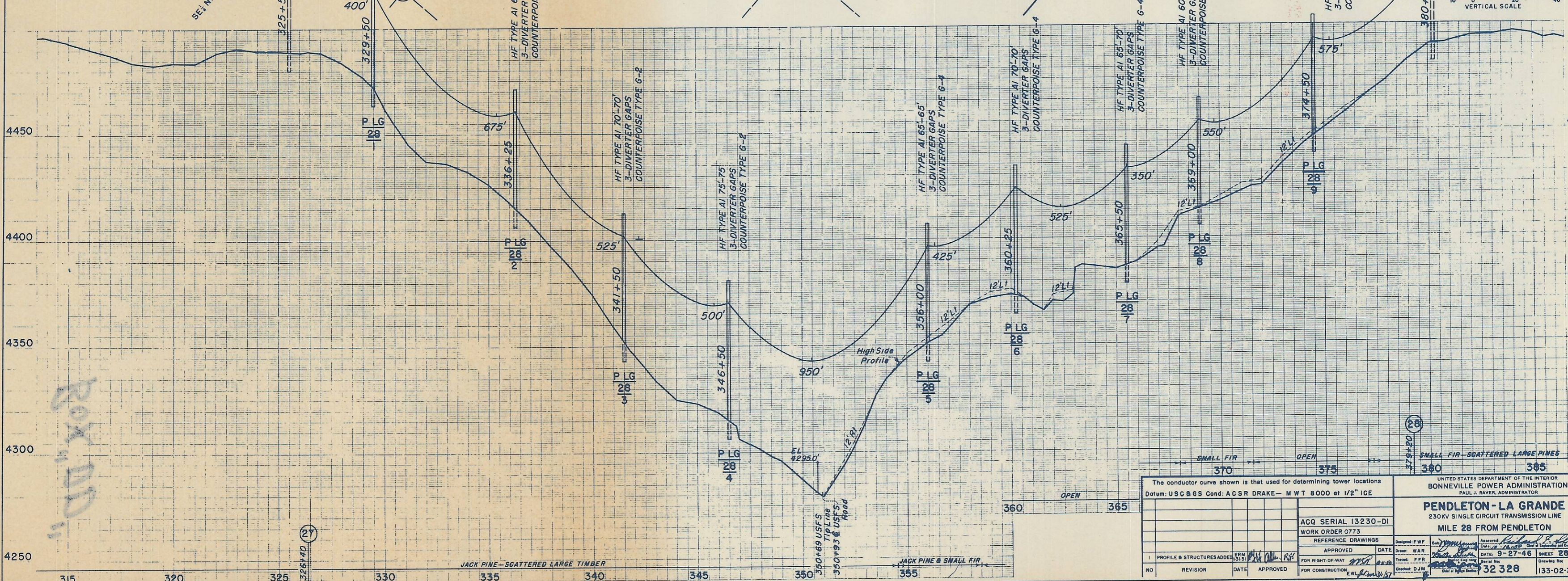
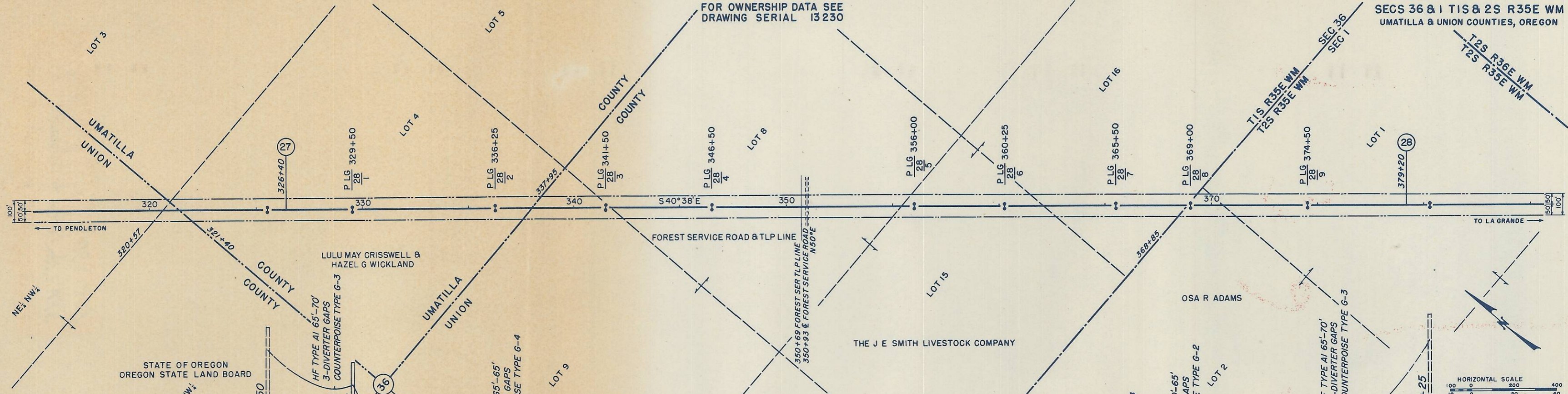


FOR OWNERSHIP DATA SEE
DRAWING SERIAL 13230

SECS 36 & 1 T1S & 2S R35E WM
UMATILLA & UNION COUNTIES, OREGON



511633

ROX 11/11

<p>The conductor curve shown is that used for determining tower locations Datum: USCG & GS Cond: ACSR DRAKE - MWT 8000 at 1/2" ICE</p>		<p>UNITED STATES DEPARTMENT OF THE INTERIOR BONNEVILLE POWER ADMINISTRATION PAUL J. RAVER, ADMINISTRATOR</p>	
<p>ACQ SERIAL 13230-D1 WORK ORDER 0773</p>		<p>PENDLETON - LA GRANDE 230KV SINGLE CIRCUIT TRANSMISSION LINE MILE 28 FROM PENDLETON</p>	
<p>DESIGNED: F.W.F. DRAWN: W.A.R. CHECKED: D.J.M.</p>	<p>DATE: 9-27-46 SHEET 28 OF 46</p>	<p>APPROVED: [Signature] DATE: 9-27-46</p>	<p>Serial No: 32328 Drawing No: 133-02-340-D1</p>
<p>NO. REVISION DATE APPROVED</p>	<p>FOR RIGHT-OF-WAY</p>	<p>FOR CONSTRUCTION</p>	<p>DATE: 9-27-46</p>