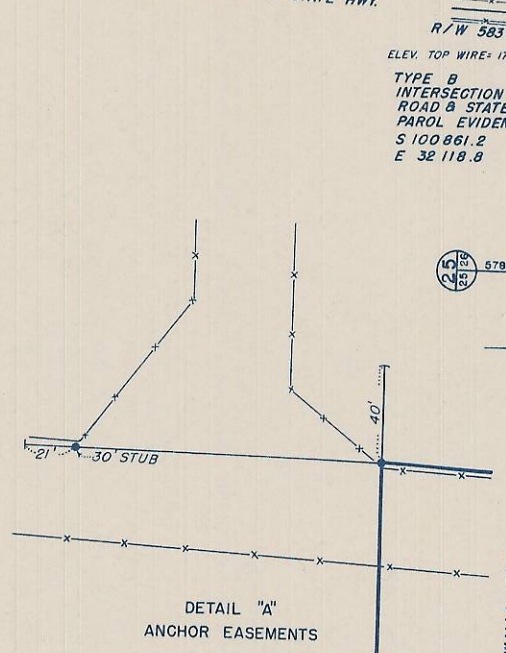


N 85° 48' W  
JO/L 583+72 C/L STATE HWY.

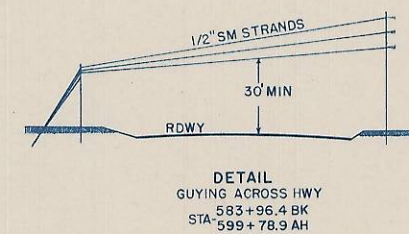
NE 1/4 NE 1/4 SECTION 24  
GEORGIA B JOHNSON  
W PE-52  
ANCHOR EASEMENT

SW 1/4 SE 1/4 SECTION 13  
S E BROGOITTI ET AL  
W PE-51C  
ANCHOR EASEMENT



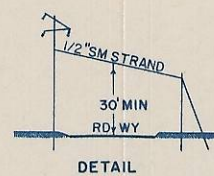
TYPE B INTERSECTION OF CO. ROAD & STATE HWY. PAROL EVIDENCE  
S 100 661.2  
E 32 118.8

EQUATION  
JO/L 583 + 96.4 BK.  
JO/L 599 + 78.9 AH.  
S 93° 40' RT  
S 100 682.5  
E 32 068.5



S 1/2 SECTION 13  
S.E. BROGOITTI, ADA R. BROGOITTI  
& MARTHA J. McALAVY  
W. PE.-51

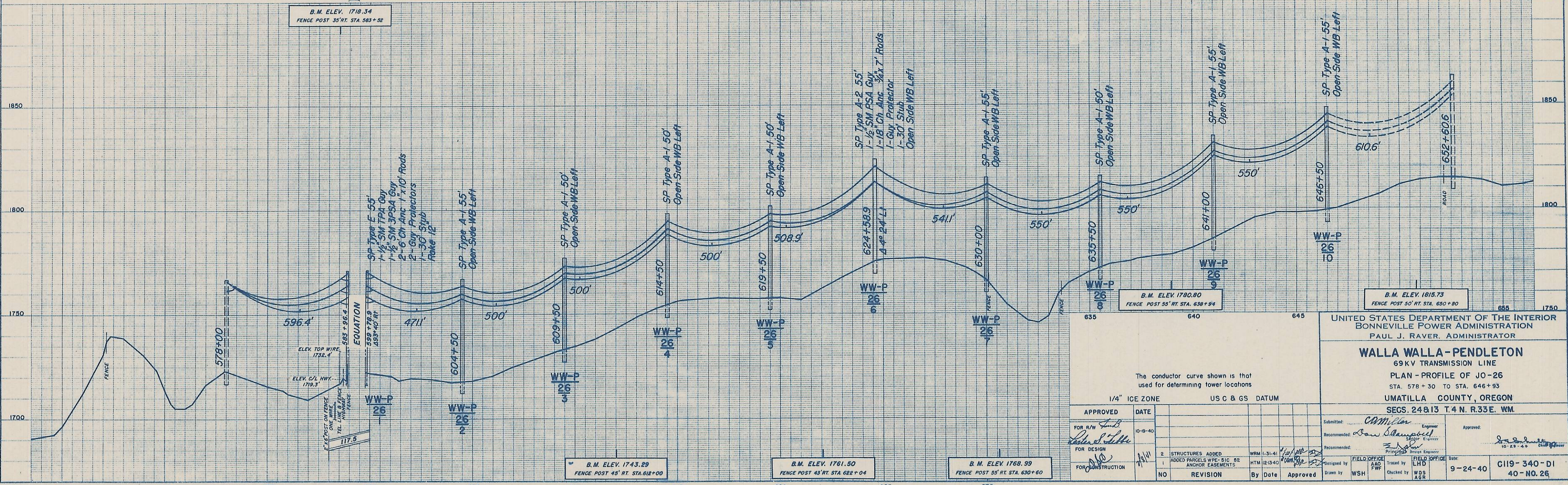
TYPE-C MODIFIED SINGLE PROPORTION  
S 100 672.6  
E 29 456.3



OREGON SECONDARY STATE HWY. NO. 334  
(ATHENA - COLD SPRINGS)  
W. PE.-51A  
R/W WIDTH 60 FT.

TYPE B INTERSECTION OF SOUTH FENCE & C/L STATE HWY. PAROL EVIDENCE  
S 100 677.9  
E 26 793.8

SCALE 1" = 500'



UNITED STATES DEPARTMENT OF THE INTERIOR  
BONNEVILLE POWER ADMINISTRATION  
PAUL J. RAVER, ADMINISTRATOR

**WALLA WALLA - PENDLETON**  
69 KV TRANSMISSION LINE  
PLAN - PROFILE OF JO-26  
STA. 578 + 30 TO STA. 646 + 93  
UMATILLA COUNTY, OREGON  
SECS. 24 & 13 T. 4 N. R. 33 E. WM.

APPROVED	DATE	FOR R/W	FOR DESIGN	FOR CONSTRUCTION
<i>[Signature]</i>	10-19-40	<i>[Signature]</i>	<i>[Signature]</i>	<i>[Signature]</i>

NO	REVISION	By	Date	Approved
1	ADDED PARCELS WPE-51C & 52 ANCHOR EASEMENTS	WJM	10-19-40	<i>[Signature]</i>
2	STRUCTURES ADDED	WJM	10-19-40	<i>[Signature]</i>

FIELD OFFICE	DATE	DESIGNED BY	CHECKED BY	TRACED BY
WJM	10-19-40	WJM	WJM	WJM