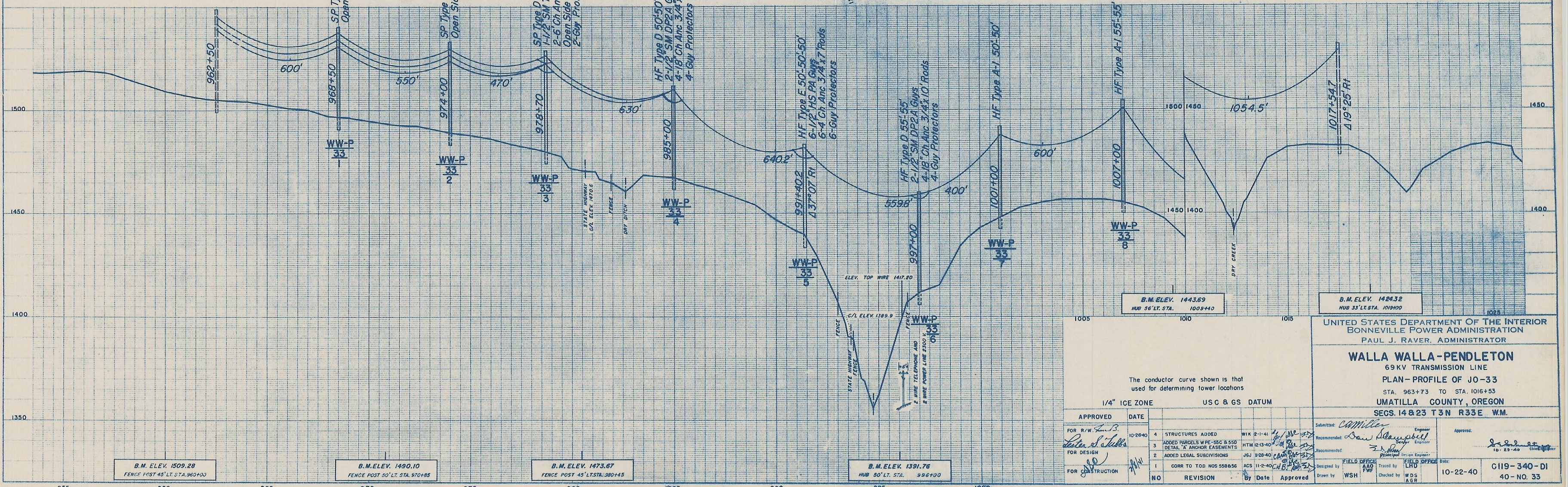
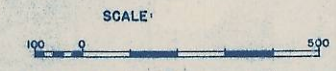
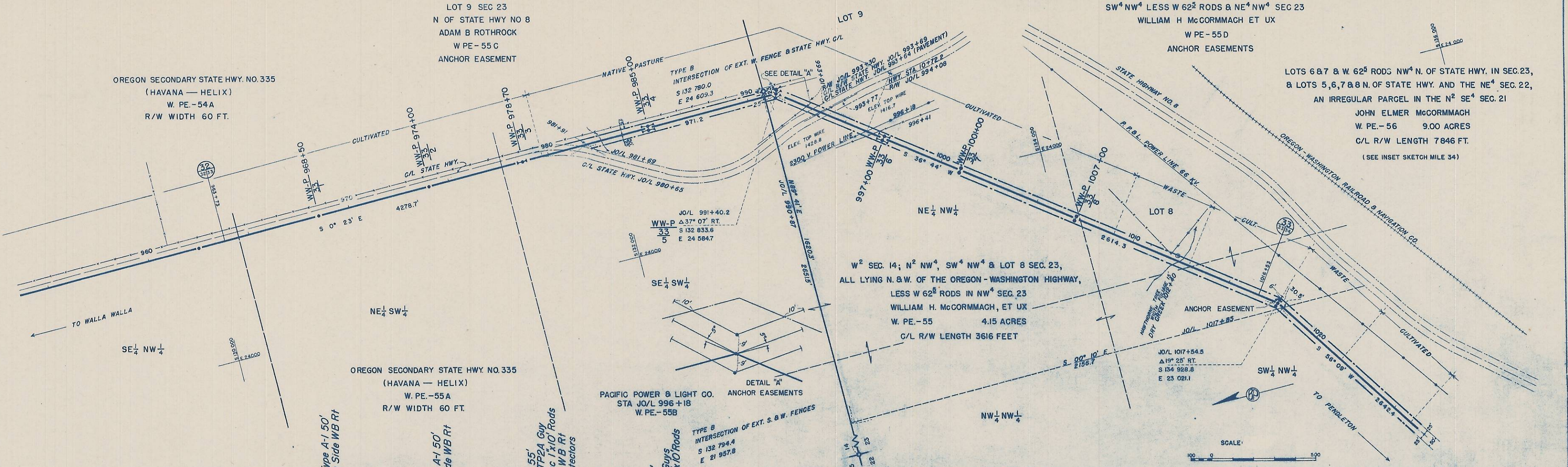


OREGON SECONDARY STATE HWY. NO. 335  
(HAVANA — HELIX)  
W. PE. -54A  
R/W WIDTH 60 FT.

LOT 9 SEC 23  
N OF STATE HWY NO 8  
ADAM B ROTHROCK  
W PE - 55 C  
ANCHOR EASEMENT

SW 1/4 NW 1/4 LESS W 62 1/2 RODS & NE 1/4 NW 1/4 SEC 23  
WILLIAM H MCCORMMACH ET UX  
W PE - 55 D  
ANCHOR EASEMENTS

LOTS 6 & 7 & W. 62 1/2 RODS NW 1/4 N. OF STATE HWY. IN SEC. 23,  
& LOTS 5, 6, 7 & 8 N. OF STATE HWY. AND THE NE 1/4 SEC. 22,  
AN IRREGULAR PARCEL IN THE N 1/4 SEC. 21  
JOHN ELMER MCCORMMACH  
W. PE. - 56 9.00 ACRES  
C/L R/W LENGTH 7846 FT.  
(SEE INSET SKETCH MILE 34)



B.M. ELEV. 1509.28  
FENCE POST 45' LT. STA. 960+00

B.M. ELEV. 1490.10  
FENCE POST 50' LT. STA. 970+88

B.M. ELEV. 1473.67  
FENCE POST 45' LT. STA. 980+45

B.M. ELEV. 1391.76  
HUB 56' LT. STA. 996+00

B.M. ELEV. 1443.69  
HUB 56' LT. STA. 1008+40

B.M. ELEV. 1484.32  
HUB 33' LT. STA. 1019+00

UNITED STATES DEPARTMENT OF THE INTERIOR  
BONNEVILLE POWER ADMINISTRATION  
PAUL J. RAVER, ADMINISTRATOR

**WALLA WALLA-PENDLETON**  
69 KV TRANSMISSION LINE  
PLAN - PROFILE OF JO-33  
STA. 963+73 TO STA. 1016+53  
UMATILLA COUNTY, OREGON  
SECS. 14 & 23 T3N R33E W.M.

The conductor curve shown is that used for determining tower locations

1/4" ICE ZONE USC & GS DATUM

APPROVED	DATE	1	STRUCTURES ADDED	WIK 2-1-41	Submitted	Checked	Approved
FOR R/W	10-26-40	3	ADDED PARCELS W PE - 55C & 55D DETAIL 'A' ANCHOR EASEMENTS	HTM 12-13-40	Recommended	Recommended	
FOR DESIGN		2	ADDED LEGAL SUBDIVISIONS	JGV 12-28-40	Recommended	Recommended	
FOR CONSTRUCTION		1	CORR TO TOD NOS 558856	ACS 11-2-40	Designed by	Traced by	
		NO	REVISION	By Date Approved	Drawn by	Checked by	

10-22-40 C119-340-DI  
40-NO. 33