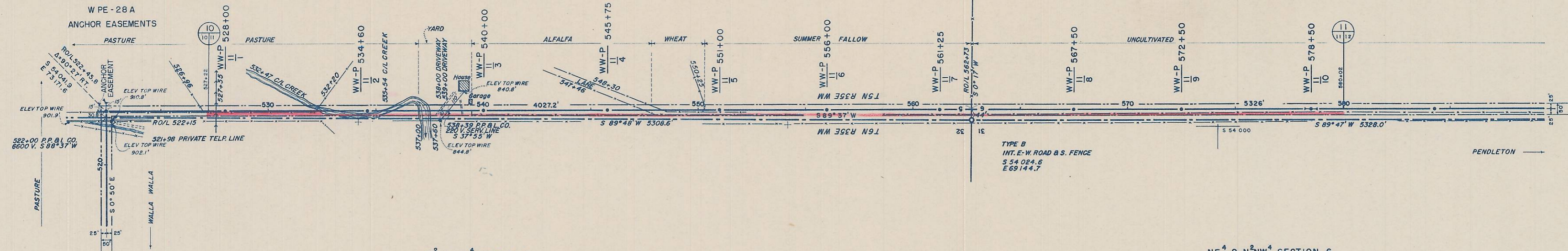
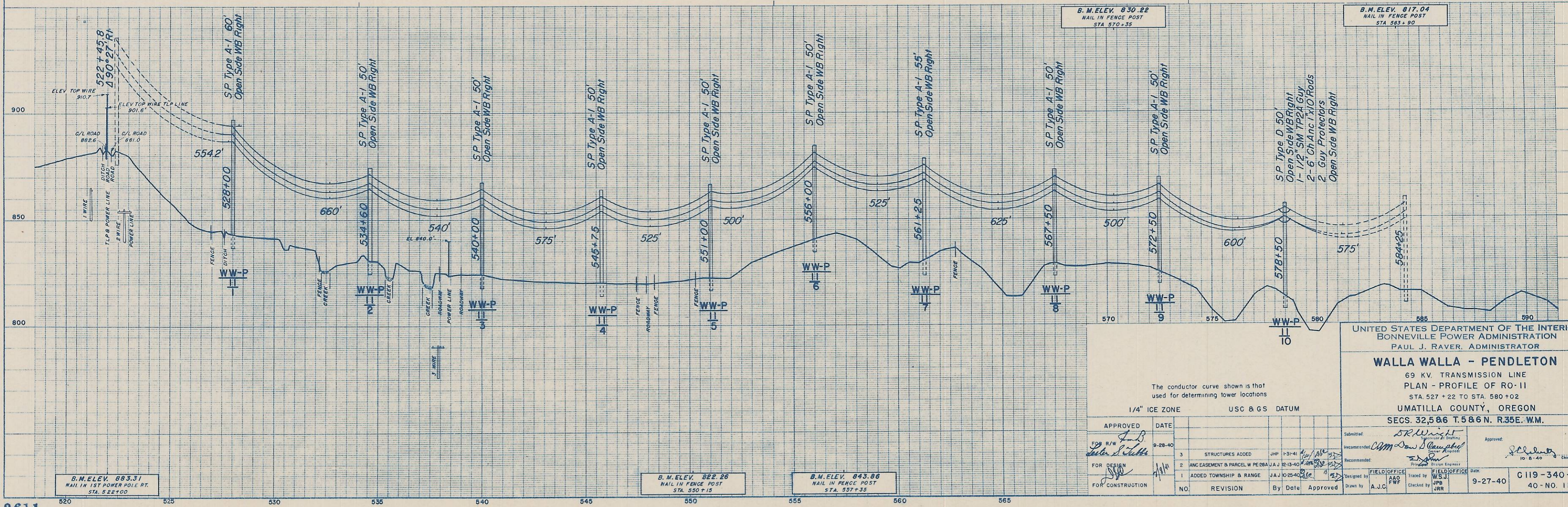


NE⁴ NE⁴ SECTION 5
JOHN HANCOCK MUTUAL LIFE INS CO
W PE - 28 A
ANCHOR EASEMENTS



E² & NW⁴ SECTION 5
JOHN HANCOCK MUTUAL LIFE INS. CO.
W PE-28 4.66 ACRES
C/L R/W LENGTH 4058 FT.

NE⁴ & N² NW⁴ SECTION 6
LOUIS HOFFMAN ET UX
W PE-29 6.11 ACRES
C/L R/W LENGTH 5326 FT.



B.M. ELEV. 830.22
NAIL IN FENCE POST
STA 570+35

B.M. ELEV. 817.04
NAIL IN FENCE POST
STA 583+80

B.M. ELEV. 883.31
NAIL IN 1ST POWER POLE RT.
STA. 528+00

B.M. ELEV. 822.26
NAIL IN FENCE POST
STA. 550+15

B.M. ELEV. 843.86
NAIL IN FENCE POST
STA. 557+35

The conductor curve shown is that used for determining tower locations
1/4" ICE ZONE USC & G S DATUM

UNITED STATES DEPARTMENT OF THE INTERIOR
BONNEVILLE POWER ADMINISTRATION
PAUL J. RAVER, ADMINISTRATOR

WALLA WALLA - PENDLETON
69 KV. TRANSMISSION LINE
PLAN - PROFILE OF RO-11
STA 527+22 TO STA 580+02
UMATILLA COUNTY, OREGON
SECS. 32, 5 & 6 T. 5 & 6 N. R. 35E. W.M.

APPROVED	DATE	NO.	REVISION	By	Date	Approved
<i>[Signature]</i>	9-28-40	3	STRUCTURES ADDED	JHP	1-31-41	<i>[Signature]</i>
<i>[Signature]</i>	10/14/40	2	ANC EASEMENT & PARCEL W PE 28A JAJ	12-13-40	JAJ	<i>[Signature]</i>
<i>[Signature]</i>	10/14/40	1	ADDED TOWNSHIP & RANGE	JAJ	10-25-40	<i>[Signature]</i>

FIELD OFFICE: AAO PWF, Checked by: JRR
 FIELD OFFICE: W.S.J., Traced by: JRR
 Date: 9-27-40
 C 119-340-DI
 40-NO. 11