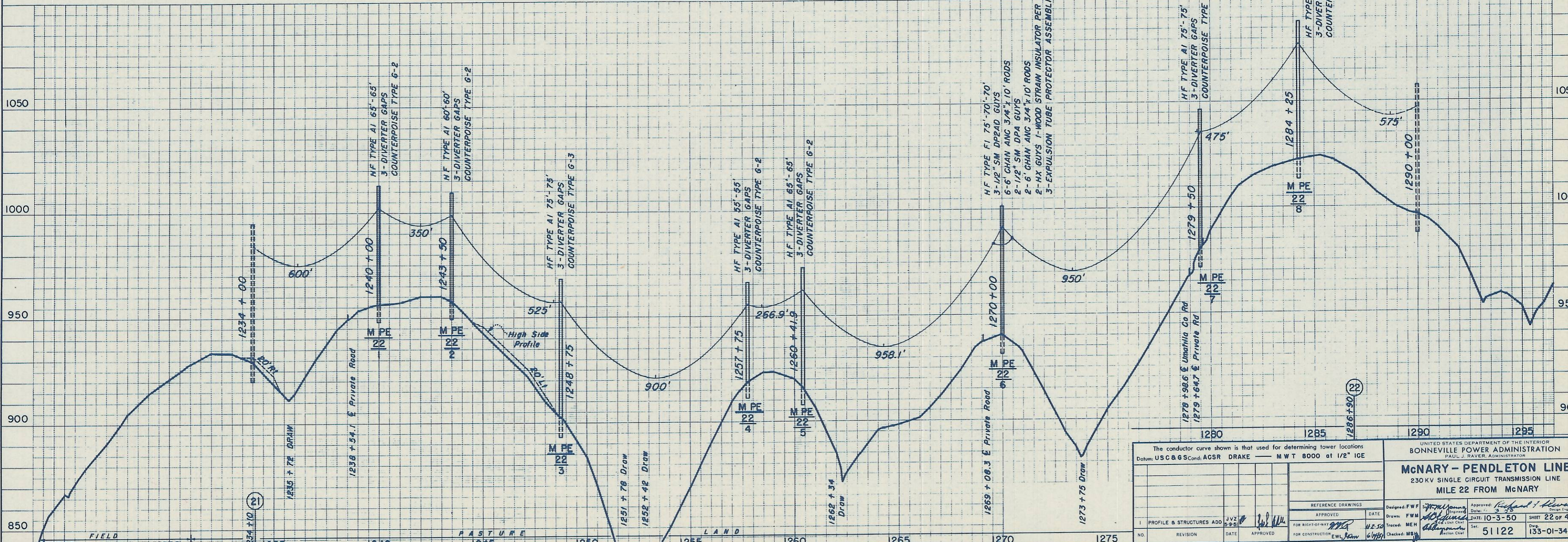
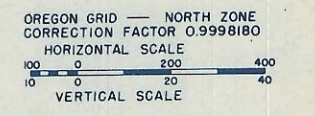
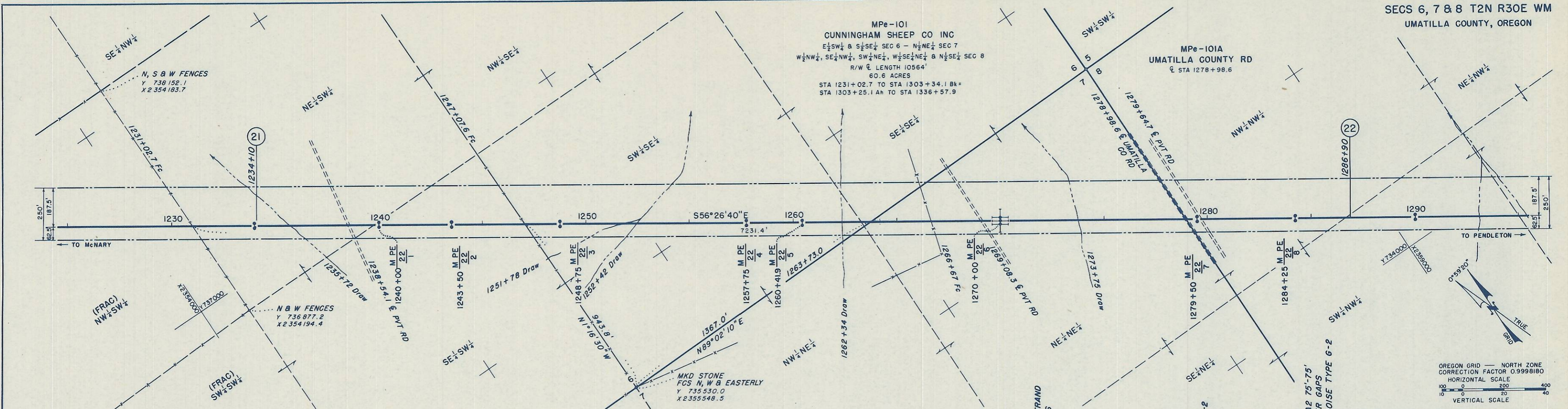


MPe-101
CUNNINGHAM SHEEP CO INC
E 1/2 SW 1/4 & S 1/2 SE 1/4 SEC 6 - N 1/2 NE 1/4 SEC 7
W 1/2 NW 1/4, SE 1/4 NW 1/4, SW 1/4 NE 1/4, W 1/2 SE 1/4 NE 1/4 & N 1/2 SE 1/4 SEC 8
R/W & LENGTH 10564'
60.6 ACRES
STA 1231+02.7 TO STA 1303+34.1 BK+
STA 1303+25.1 AH TO STA 1336+57.9

MPe-101A
UMATILLA COUNTY RD
& STA 1278+98.6



The conductor curve shown is that used for determining tower locations
Datum: USC & G S Cond: ACSR DRAKE — MWT 8000 at 1/2" ICE

DESIGNED: FWF	DATE: 10-3-50	SHEET: 22 OF 40
DRAWN: FWF	CHECKED: MEH	DATE: 10-3-50
APPROVED: [Signature]	DATE: 10-3-50	PROJECT: McNARY - PENDLETON LINE
FOR CONSTRUCTION: EWL	DATE: 6/1/51	NO. 51122

UNITED STATES DEPARTMENT OF THE INTERIOR
BONNEVILLE POWER ADMINISTRATION
PAUL J. RAVER, ADMINISTRATOR

McNARY - PENDLETON LINE
230KV SINGLE CIRCUIT TRANSMISSION LINE
MILE 22 FROM McNARY

135-01-340-01