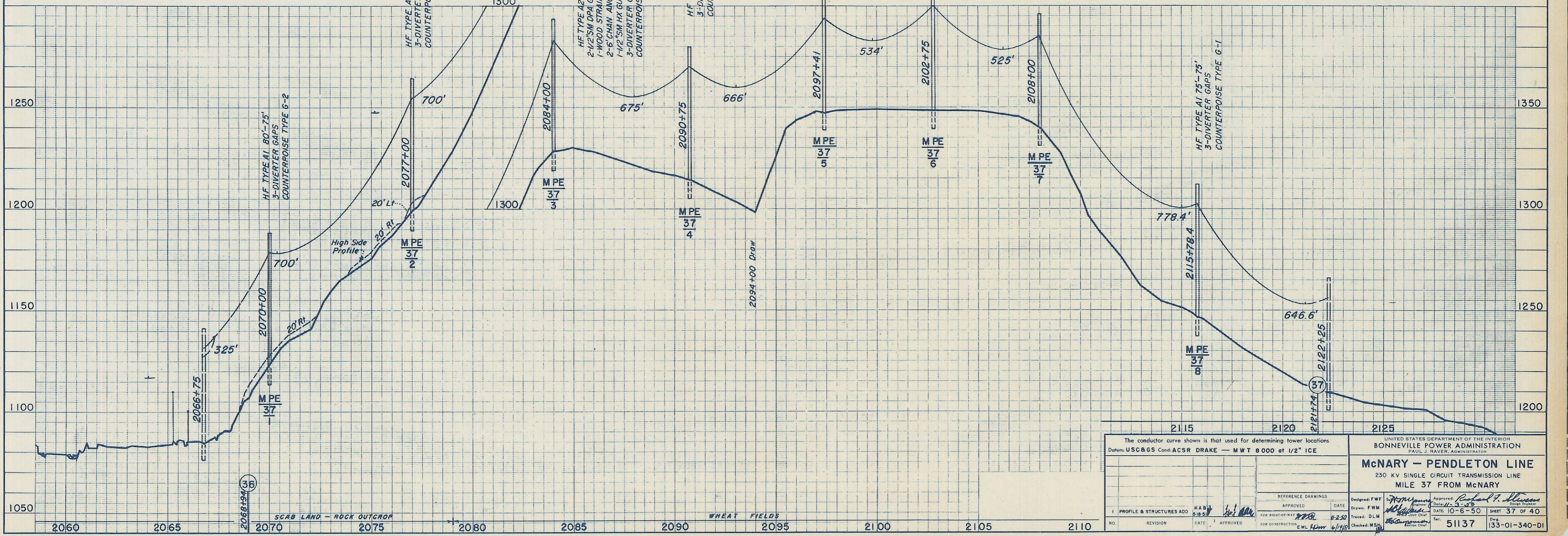
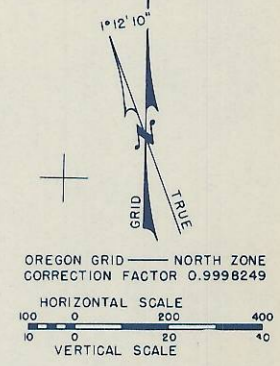
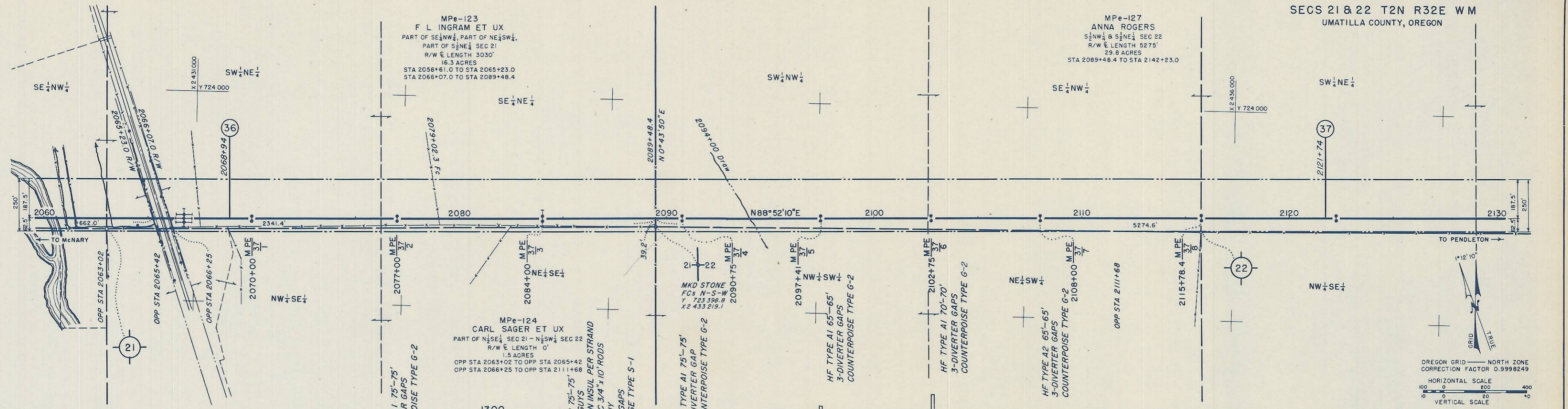


MPE-123  
F L INGRAM ET UX  
PART OF SE 1/4 NW 1/4, PART OF NE 1/4 SW 1/4,  
PART OF S 1/2 NE 1/4 SEC 21  
R/W & LENGTH 3030'  
16.3 ACRES  
STA 2058+61.0 TO STA 2065+23.0  
STA 2066+07.0 TO STA 2089+48.4

MPE-127  
ANNA ROGERS  
S 1/2 NW 1/4 & S 1/2 NE 1/4 SEC 22  
R/W & LENGTH 5275'  
29.8 ACRES  
STA 2089+48.4 TO STA 2142+23.0

MPE-124  
CARL SAGER ET UX  
PART OF N 1/2 SE 1/4 SEC 21 - N 1/2 SW 1/4 SEC 22  
R/W & LENGTH 0'  
1.5 ACRES  
OPP STA 2063+02 TO OPP STA 2065+42  
OPP STA 2066+25 TO OPP STA 2111+68



The conductor curve shown is that used for determining tower locations Datum: USCGS Contd ACSR DRAKE - MWT 8000 at 1/2" ICE		UNITED STATES DEPARTMENT OF THE INTERIOR BONNEVILLE POWER ADMINISTRATION PAUL J. RAVER, ADMINISTRATOR	
<b>McNARY - PENDLETON LINE</b> 230 KV SINGLE CIRCUIT TRANSMISSION LINE MILE 37 FROM McNARY		Designed: FWF Drawn: FWM Traced: DLM Checked: MSH	
APPROVED	DATE	DATE	SHEET 37 OF 40
FOR RIGHT-OF-WAY	11-2-50	DATE: 10-6-50	51137
FOR CONSTRUCTION	EWL 40m 6/1/50	Checked: MSH	Dwg. 133-01-340-01