

MPe-127
ANNA RODGERS
S 1/2 NW 1/4 & S 1/2 NE 1/4 SEC 22
R/W & LENGTH 5275'
29.8 ACRES
STA 2089+48.4 TO STA 2142+23.0

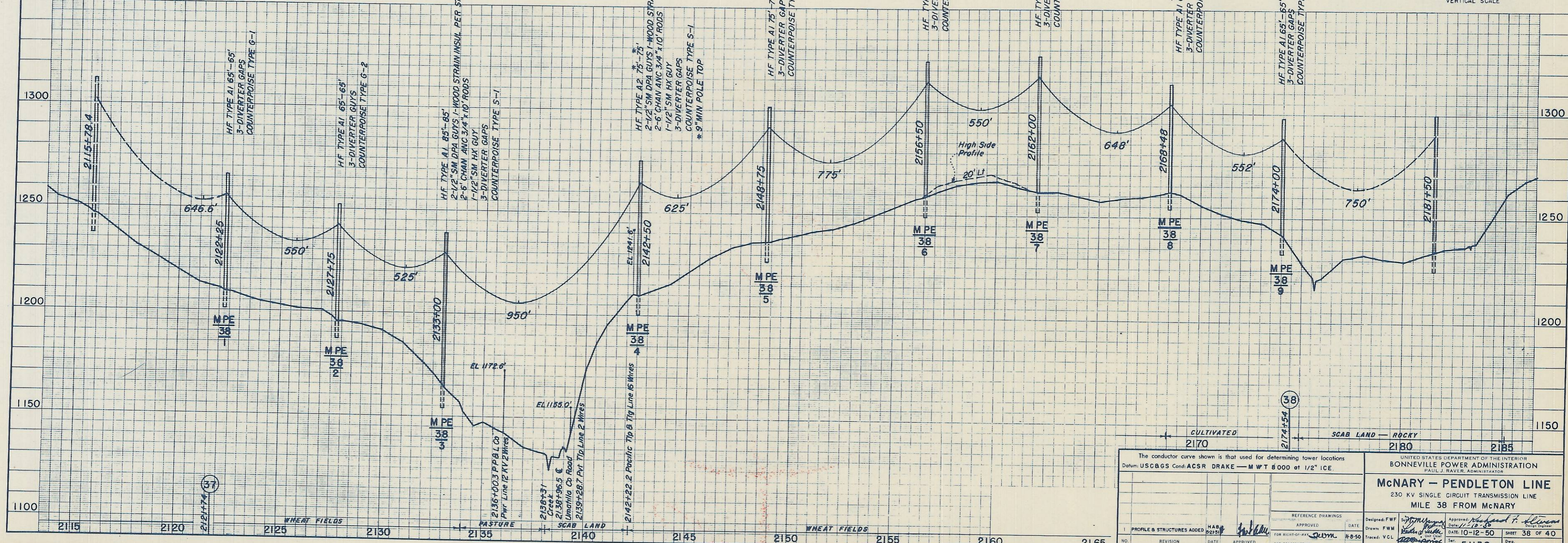
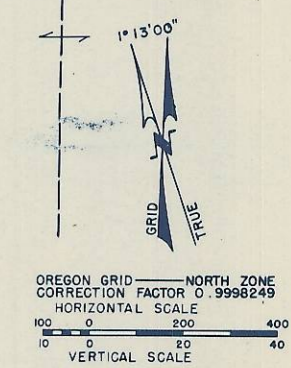
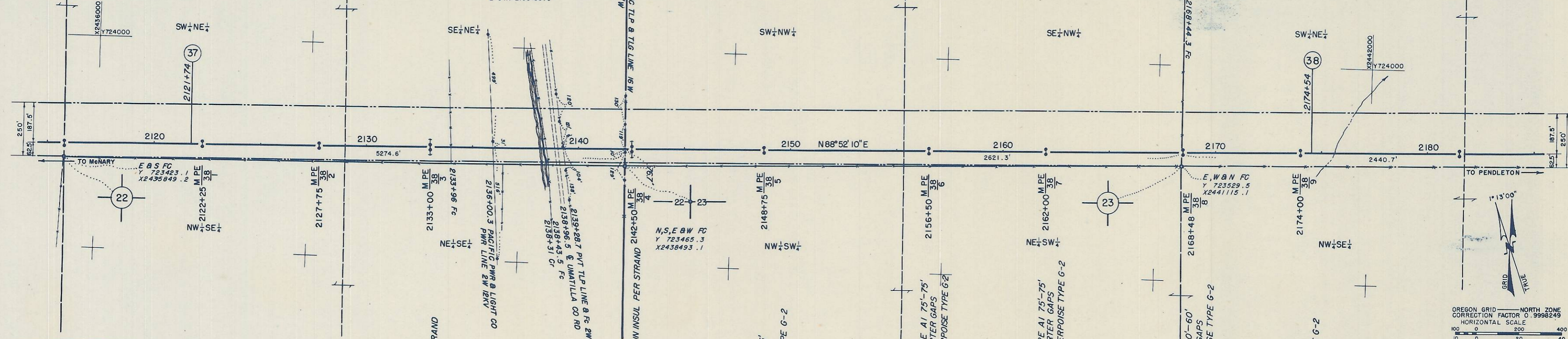
MPe-127A
PACIFIC POWER & LIGHT CO
STA 2136+00.3

MPe-127B
UMATILLA COUNTY RD NO 382
& STA 2138+96.5

MPe-127D
PACIFIC TLP & TLG CO
STA 2142+22.2

MPe-128
JESSIE M BELL
S 1/2 NW 1/4 SEC 23
R/W & LENGTH 2621'
15.0 ACRES
STA 2142+23.0 TO STA 2168+44.3

MPe-129
E A FANSHIER
PART OF S 1/2 NE 1/4 SEC 23
R/W & LENGTH 2441'
14.0 ACRES
STA 2168+44.3 TO STA 2192+85.0



The conductor curve shown is that used for determining tower locations
Datum: USCGS Cond. ACSR DRAKE - M WT 8000 at 1/2" ICE.

DESIGNED: FWM	DATE: 10-12-50	SHEET: 38 OF 40
DRAWN: FWM	DATE: 10-12-50	
CHECKED: MSH	DATE: 10-12-50	
APPROVED: [Signature]	DATE: 10-12-50	

UNITED STATES DEPARTMENT OF THE INTERIOR
BONNEVILLE POWER ADMINISTRATION
PAUL J. RAVER, ADMINISTRATOR

McNARY - PENDLETON LINE
230 KV SINGLE CIRCUIT TRANSMISSION LINE
MILE 38 FROM McNARY

51138
133-01-340-D1